

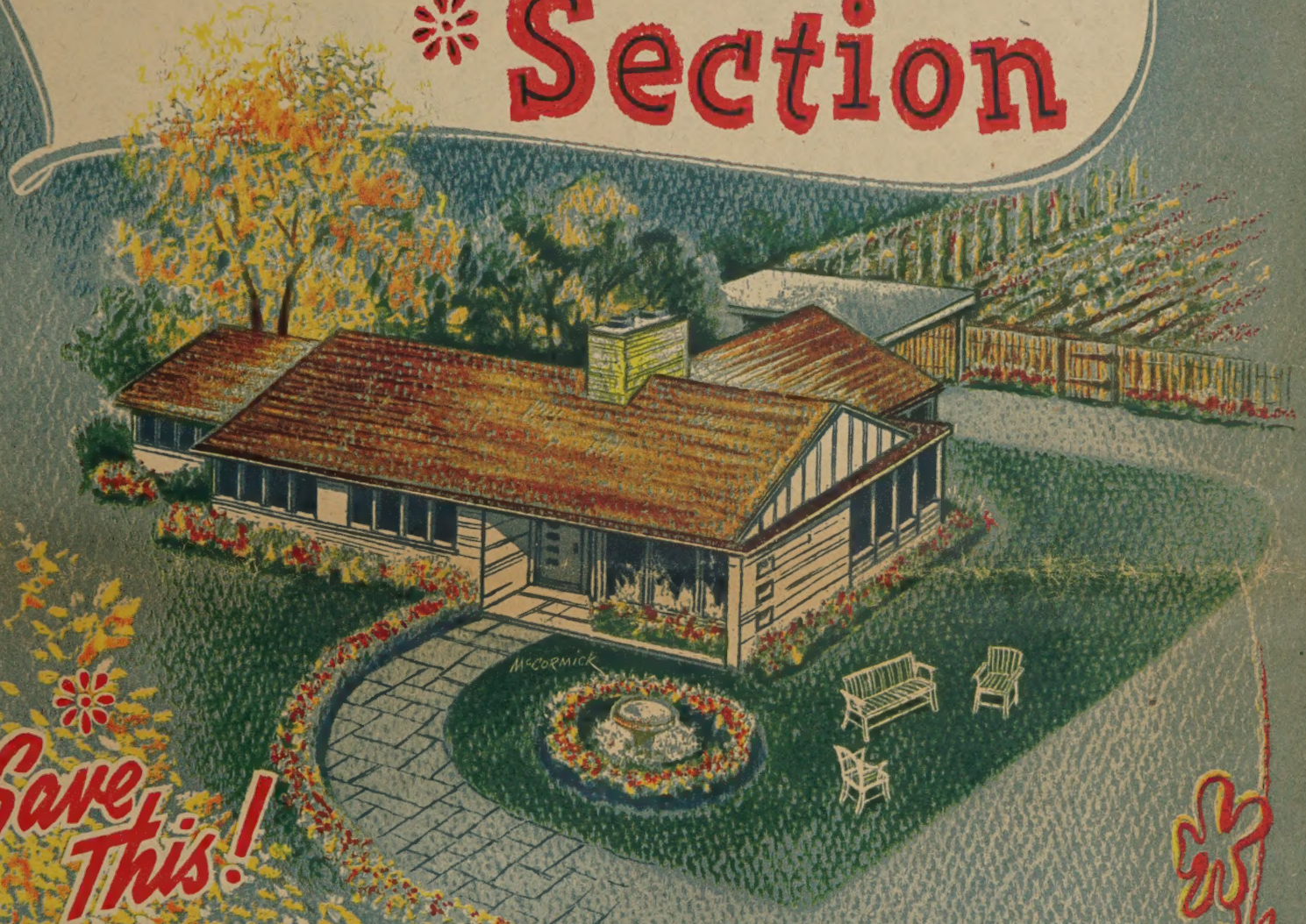
62.33

MAR 17 1954  
U. S. Depart

# Reuter's 1954

## LAWN and GARDEN SEED, SUPPLIES and EQUIPMENT

# \* Section



**Save This!**

**For Your Future Gardening Reference.**  
When ordering, use convenient order blank on page 17.

**THIS** is our new seed and garden supply guide for 1954, coming to you in modern, new magazine style. Be sure and save your copy of this helpful section for future reference and ordering. Reuter's enjoys an enviable reputation for quality and stands ready to help you make yours — "A Garden Beautiful."

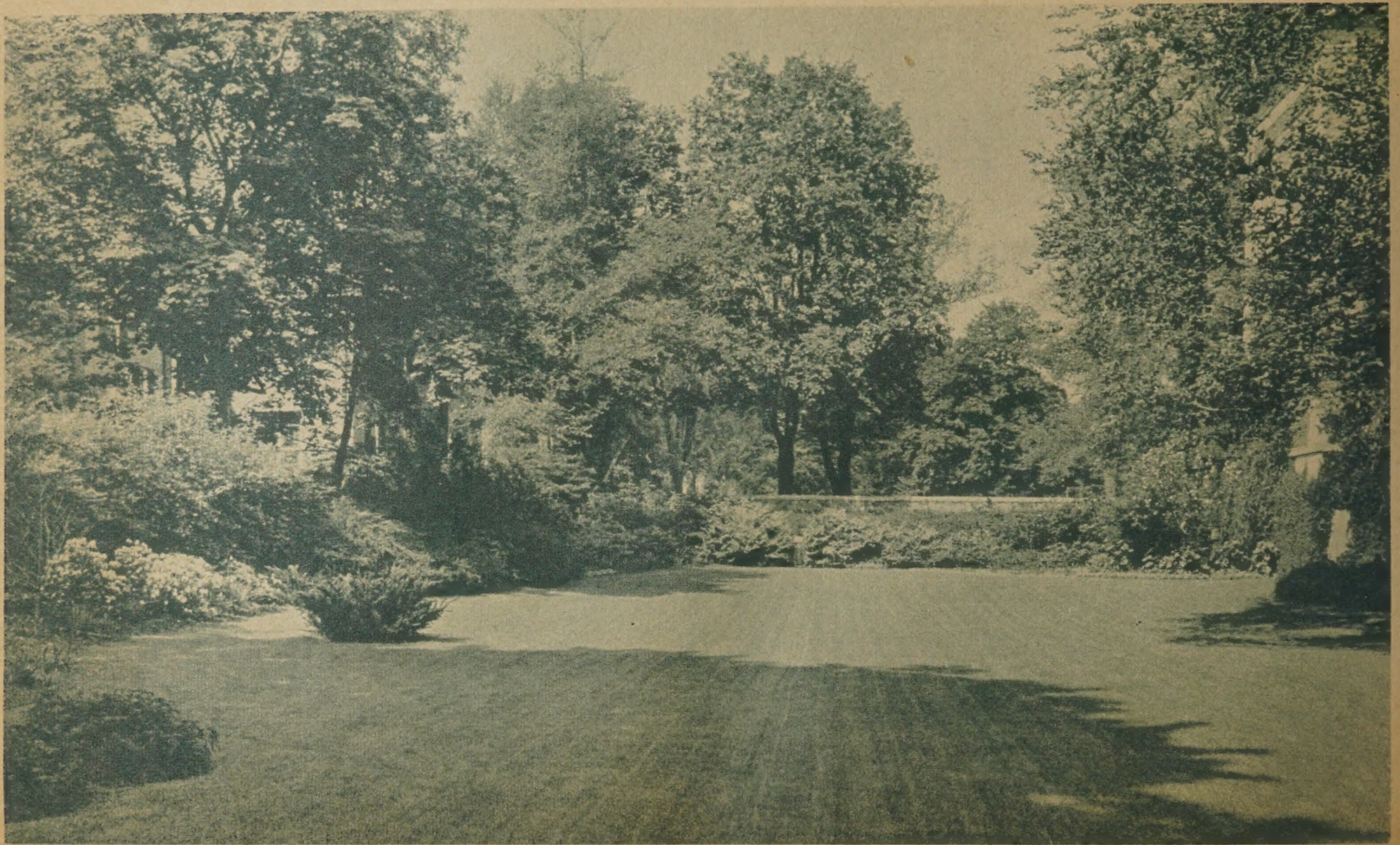


# REUTER SEED COMPANY Inc.

NEW ORLEANS, LOUISIANA

320 N. CARROLLTON AVE.

1035 DECATUR ST.



## The Beauty of the Lawn ADDS TO THE CHARM OF THE HOME

**848 AMERICAN RYE GRASS.** (Arasan Treated) The finest Winter Lawn Grass for the South. It is a fast-growing annual with broad, flat blades of delightful green color. Will produce a beautiful and luxuriant solid carpet of grass within two weeks. Sow at the rate of 1 pound to 75 to 100 square feet. On new lawns a rake can be used in mixing the seed into the surface soil. When sowing on a Bermuda or Carpet lawn the grass should be mowed as closely as possible before sprinkling the seed, and for better germination the lawn should be given a light covering with good soil or Peat Moss. Lb. 35c; 5 lbs. \$1.40; 10 lbs. \$2.00; 100 lbs. \$15.50. Postpaid price: 5 lbs. \$1.75.

**828 ZOYSIA JAPONICA.** This fine-leaved lawn grass will thrive well both in full sun and in dense shade. Because it grows only 3 to 4 inches tall, it requires little mowing. The new strain we are offering grows as rapidly as St. Augustine Grass in warm weather, is immune to chinch bugs and has a tendency to crowd out crab grass. Formerly this grass could not be planted from seed, for seed production was exceedingly difficult; however, much experimentation and laboratory work has now made this excellent lawn grass available to you in its easiest planting form—seed. Full directions for planting with each purchase. Lb. \$4.50; 5-lb. bag \$20.75. Postpaid prices: Lb. \$4.75; 5-lb. bag \$21.25.

**829 FANCY BERMUDA GRASS.** The most dependable Summer Lawn Grass for Southern gardens. Makes a tough, even, clumpless turf that recovers quickly after cutting. Lasts for years and stands long, hot, dry summers without injury. Succeeds on nearly all types of soil. Germinates in 20 to 30 days with proper soil-moisture. Sow at the rate of 4 pounds to 1000 square feet, from March to September. The seed can be sown on top of your winter grass after mowing same closely. Pass a rake over the grass to prevent the fine seeds from sticking to the blades. Although a perennial, the top of Bermuda Grass dies down during cold winters, but will come up again the next spring. Lb. 70c; 5 lbs. \$3.00; 10 lbs. \$4.90; 100 lbs. \$45.00. Postpaid prices: Lb. 80c; 5 lbs. \$3.45.

**830 CARPET GRASS.** Splendid Lawn Grass for the South. Better than Bermuda for poor, sandy soil and semi-shady lawns. It is a perennial, spreading by creeping stems which root at every joint, thus forming a close, compact turf. Germinates in 20 to 30 days if soil is kept properly moist. For a closely matted lawn, sow at the rate of 5 pounds per 1000 square feet from March until July. Like Bermuda Grass, the seed may be sown on top of your winter lawn after close mowing. Reuter offers only stock that has been carefully analyzed for purity and germination by Senior Seed Analysts. Lb. 75c; 5 lbs. \$3.25; 10 lbs. \$5.10; 100 lbs. \$47.00. Postpaid prices: Lb. 90c; 5 lbs. \$3.75.

**826 HULLED BERMUDA GRASS.** Reuter offers extra-fancy Bermuda Grass with the hulls removed, a new process which gives much quicker germination. Under favorable moisture and soil conditions, Reuter's Hulled Bermuda Grass will germinate in 8 to 10 days, almost as quickly as Rye Grass. It is more economical because half the quantity is necessary to sow 100 square feet of lawn. Be sure to specify hulled seed when ordering, as otherwise the unhulled seed will be shipped. Lb. 95c; 5 lbs. \$4.20; 10 lbs. \$7.30; 100 lbs. \$68.00. Postpaid prices: Lb. \$1.05; 5 lbs. \$4.65.

**ST. AUGUSTINE GRASS.** In Florida, and to an ever-increasing extent in New Orleans, the shady lawn problem has been solved by the use of this perennial creeping grass. It is a deep green, broad-bladed grass, creeping by means of surface runners. Somewhat similar to Carpet Grass, except it has a better color and stays green during ordinary winters. Seed is not available, but lawns are established with rooted runners, laid down in parallel trenches about 8 to 10 inches apart and 2 inches deep, with a flat slope on one side and nearly vertical on the other. A bushel will plant from 150 to 200 square feet, depending on how close it is set. Bus. \$2.25; 10 bus. \$20.00, f. o. b. New Orleans.

**The REO ROYALE De Luxe**  
A completely equipped, big capacity de luxe power mower with a 21" cutting width, 1 3/4 h. p., 4-cycle, easy-starting Reo engine with 2-to-1 gear reduction to permit low-throttle operation without stalling. Uses "regular" gas. Single "Magic Touch" control to start, stop, speed-up or slow down. Cutting height adjustable from 1/2" to 2 3/4".

**\$139.50**

F. O. B. New Orleans, La.

**KING O'LAWN**  
POWER EDGER

You can now breeze through your lawn edging in jiffytime. The King O'Lawn Edger trims or edges along walks, curbs, driveways, trees, flower beds, houses, fences, etc. Equipped with either Briggs & Stratton or Clinton 4-cycle gasoline engine, and extremely simple to operate. Really a time and labor saver.

**\$119.00**

F. O. B. New Orleans, La.

**The REO De Luxe REVO-LAWN**  
Makes mincemeat of tough weeds and tall grass, mulching as it mows—leaving a clean, smooth swath in its wake. Special ejection chute eliminates clogging. 18" cutting width, side and front-trimmer type. Easy to sharpen. 1-piece alloy steel cutting blade. 1 1/2 h. p., 4-cycle, easy-starting Reo engine uses "regular" gas. Cutting height adjustable 1" to 3". Beautifully balanced for exceptional handling ease.

**\$109.50**

F. O. B. New Orleans, La.



REUTER'S SEEDS "Known for Quality"

# Flower Novelties

"ENRICH YOUR GARDEN WITH THESE New and Novel COLORFUL FLOWERS"



BLAZE ZINNIA

## Royal Carpet ALYSSUM

1129 *Royal Carpet*. All-America Winner, 1953. In drifts of vibrant purple color like a tropical sea or a neat and well-behaved edging for the flower bed, this new companion for Carpet of Snow will grow a few inches high but 10 inches across, flowering from when only weeks old until the end of the season. Possibly the world's easiest flower to grow from seed, it has no pest or disease troubles. Pkt. 35c.

## BELLS OF IRELAND

1270 An interesting novelty item for both home gardener and commercial grower, and especially around St. Patrick's Day. Plants grow about two feet tall and produce foliage and flowers of the same attractive light green color. Flowers practically cover the stem, are delicately veined and have a small white center. For table arrangements it is completely different and unusually attractive. Bells of Ireland is also a good hot weather flower. Pkt. 30c.

## CYNOGLOSSUM

1449 *White Cloud (Dwarf Compact)*. Delights with small, dainty, pure white, forget-me-not-like blooms borne in small cloud-like clusters on a dwarf compact plant. The plant habit, size of bloom and general growth is similar to the popular Firmament. Planted together, White Cloud and Firmament creates an exquisite combination of blue and white that challenges for sheer beauty the fleecy white clouds in a celestial blue sky. Pkt. 50c.

## MARIGOLD

1751 *Brownie (Dwarf French Single)*. The contrasting hues of vivid russet red and glistening golden yellow of this new Marigold creates a strong color combination. The large crested centers are made up of hundreds of slender, glistening golden tube-like petals that seem to fairly burst from a rich mahogany-red disk of a single row of mildly serrated flat overlapping petals. The mahogany-red petals are edged with a fine line of gold. Brownie produces a generous supply of blooms 2 inches in diameter. The plant habit is dwarf and bush-like. Excellent for bedding and dwarf bouquets. Pkt. 50c.

## MARIGOLD

1749 *Cupid*. The sole Extra-Dwarf African (Chrysanthemum-flowered) Marigold in circulation. It is the perfect pot or edging Marigold, bearing 2½- to 3-inch lemon-yellow flowers on a compact, 8-inch plant. Pkt. 35c.



LITTLE SWEETHEART SWEET PEA

## BLAZE ZINNIA

The 1954 All-America Award Winner

2137 *Blaze*. All America Winner for the best new flower for 1954. Newest, most vivid of the Giant Hybrid Zinnias. Blaze is outstanding for the uniform doubleness of its fluffy, gracefully quilled petals which reach 5¼ inches across. Blaze bursts into bloom with a profusion of brilliant mandarin-red flowers which soften to scarlet-orange as the flowers attain size. This fiery beauty is borne on free blooming, uniform plants 28 to 32 inches tall. Pkt. 50c.

## NASTURTIUM

1766 *Fiery Festival*. A semi-double Gleam Nasturtium of a warm, deep scarlet-orange with black penciling in the throat. Extra-large blooms. Pkt. 10c; oz. 40c.



ROYAL CARPET ALYSSUM



CUPID MARIGOLD



for Your Gardening Success AND Pleasure  
Get Your Copy of "Southern Gardening Aid" ONLY 15c

This 34-page booklet is packed with gardening information that is pertinent to the South. It has been written in a simple, easy-to-understand style and is supplemented by many diagrams and charts. The topics covered in this booklet are—Landscaping, Annuals, Perennials, Spring Bulbs, Fall Bulbs, Lawns, Fertilizing, Shrubs, Flowering Shrubs, Transplanting, Insects and Fungus, Roses, Chrysanthemums, Azaleas and Camellias, Trees, Pruning, Flower Seed Planting Guide, Southern Garden Calendar, etc.



BELLS OF IRELAND

## PETUNIA

1805 *Comanche*. All-America Winner, 1953. An F1 Hybrid Petunia of the deepest red color yet offered. It is the most brilliant Petunia ever bred and was judged by experts as superior to any other variety in its class. A fast grower, it produces non-fading flowers 2½ to 2¾ inches in diameter. Comanche's hybrid vigor makes it an excellent bedding plant, standing erect, about 13 inches high. Pkt. \$1.00.

## SNAPDRAGON

1176 *Double Hybrid, Mixed Colors*. This Snapdragon produces flowers that are sensational both in large size and in unusual and amazing formation. The upper lip broadens and recurves gently, and a flare which is slightly frilled protrudes from the rounded portion of the lower lip. As is the case in all hybrids, the plants are larger and vary from 20 to 30 inches tall. Pkt. \$1.00.

## SWEET PEA

2019 *Little Sweetheart (Dwarf Mixed)*. Welcomed as a completely new class in this popular flower. It is a perfect mound of flowers eight inches in height and width. Plants retain their upright compact growth throughout the season and flowers completely cover foliage. Flowers are the large Ruffled Spencer type. This novelty was bred especially for the home gardener who can now use a Sweet Pea for borders, bedding or pot plant culture. Truly a magnificent flower innovation. Pkt. 50c.

## VERBENA

2095 *Sparkle*. An entirely new class of Verbena with a dwarf and compact habit. Sparkle is the sharpest color yet offered in Verbenas, bearing flowers of bright scarlet-red greatly intensified by a large gleaming white eye. A prolific bloomer throughout the entire season. The grandiflora-size blooms are produced in clusters of twelve to fifteen per plant. Pkt. 35c.



COMANCHE PETUNIA





CHRYSANTHEMUMS

Showy, free-flowering annual, summer Chrysanthemums, not to be confused with the florist varieties. With their gay and striking colors and combinations they are splendid subjects for borders and for cutting.

- 1362 Single, Mixed. Attractive, daisy-like flowers. Height 2 feet. Pkt. 10c; 1/2 oz. 45c; oz. 80c.
1366 Double, Mixed. Dainty double blooms in white and yellow shades. Height 3 feet. Pkt. 10c; 1/2 oz. 40c; oz. 70c.

CLEOME

1340 Pink Queen. Silver Medal Winner, 1942. This beautiful new Spider Plant is extremely easy to grow, reaching a height of about 4 feet. It produces huge heads of a delightful salmon-pink color. Before falling the lower flowers on the trusses fade to a bluish white, giving an appearance of a white collar with a pink cap. Pkt. 20c.

1341 Helen Campbell. A tall, vigorous, light-stemmed type in pure white. The pure white color and light green stems are distinct breaks. A flower unsurpassed for delicate grace. Pkt. 25c.

COLEUS

1385 Ornamental pot and bedding plants, with strikingly colored foliage. Prefer sunny location. Height 15 inches. Pkt. 50c.



SALVIA, Blaze of Fire—See Page 7.

CELOSIA—Cockscomb

The dwarf Cockscombs, with their massive heads, make very showy borders, while the stately feathered types form the rarest possible decoration in large, massed beds.

- 1331 Dwarf Glasgow Frize. Immense dark crimson, densely crested, very showy combs. Pkt. 25c.
1333 Pride of Castle Gould. Immense feathered plumes; all colors. Height 3 feet. Pkt. 20c.
1334 Gilbert's Maple Gold. Showy bedding plants, carrying enormous globular, maple-pink flower heads tipped brilliant gold. Height 2 1/2 feet. Pkt. 25c.

CLITORIA

1346 Very graceful vine covered with fan-shaped, deep blue flowers with soft yellow throats. Fine for covering trellises and fences. Pkt. 35c.



COSMOS, Sensation, Radiance



MARIGOLD, Glitters—See Page 6

COSMOS

Delightful annuals with feathery, fresh green foliage and large artistic flowers on long stems. Effective background for borders and excellent for cutting. Height 4 feet.

Early Mammoth—Flowered

- 1408 White 1412 Crimson 1410 Pink 1415 Mixture
Each: Pkt. 10c; 1/2 oz. 40c; oz. 75c.
1404 Orange Flame. An early-flowering strain of Klondyke Cosmos blooming a few months after sowing. Pkt. 15c; 1/2 oz. 50c.
1418 Sensation, Radiance. The most outstanding novelty of 1948, introducing two entirely new colors in Sensation, Cosmos—striking deep rose and rich crimson. Pkt. 15c.
1405 Yellow Flame. Color is a very rich and compelling butter-yellow. Pkt. 15c; 1/2 oz. 50c.
1420 Sensation, Mixed. The flowers are of gigantic size averaging 4 to 5 inches in diameter, with broad, heavily fluted petals. Pkt. 15c; 1/2 oz. 50c; oz. 90c.
1423 Sensation, Dazzler. The immense flowers are a lustrous shade of velvety crimson. Pkt. 15c; 1/2 oz. 35c.
1424 Early Double Crested Mixture. Broad outer petals like single Cosmos but center double and crested. Pkt. 25c.

CYNOGLOSSUM

"Chinese Forget-Me-Not"

- 1430 Blue. Delightful branching annual with small, single, forget-me-not-like blossoms of a rich turquoise-blue. Splendid for borders. Height 2 feet. Pkt. 10c; 1/2 oz. 25c; oz. 40c.
1432 Pink. Bright pink. Pkt. 15c; 1/4 oz. 35c; 1/2 oz. 60c.
1433 Firmament. Improved strain producing neat, bushy plants 15 to 18 inches tall with rich blue flowers. Pkt. 10c; 1/2 oz. 35c.
1435 Pink Firmament. Small pink flowers. Prolific bloomer. Pkt. 25c; 1/4 oz. 60c.

AFRICAN DAISY

Charming small annuals, producing a wealth of showy flowers. Very useful for low beds and borders. Height 1 foot.
1498 Hybrids, Mixed. Produce large, black-centered, daisy-like flowers in pastel shades. Pkt. 15c; 1/4 oz. 50c.
1499 Double Hybrids, Mixed. Large flowers in lovely colors with distinct double-crested centers. Pkt. 25c.

DAHLIAS

Try to grow some Dahlias from seed this year. It is quite a fascinating experience as some very pleasant surprises may develop.

- 1452 Single, Mixed. Large-flowering. Pkt. 10c; 1/4 oz. 35c; 1/2 oz. 60c.
1455 Double Decorative, Mixed. Largest and most popular strain. Pkt. 50c.
1458 Coltness Hybrids, Dwarf, bedding Dahlia with cosmos-like flowers. Very desirable for cutting. Height 2 feet. Pkt. 20c; 1/4 oz. 60c.
1457 Dwarf Hybrids. Lovely new strain of dwarf bedding Dahlias containing a high percentage of double blooms in a wide range of beautiful colors. Pkt. 25c; 1/4 oz. 75c.

DOUBLE ENGLISH DAISY

Small perennial plants for rock gardens and for edging low borders. Produce delightful double white and rose flowers. Height 6 inches.

- 1462 Giant Double, Mixed. Pkt. 25c; 1/4 oz. \$1.00.
1465 White 1467 Rose
Each: Pkt. 30c.

SHASTA DAISY

Showy perennials with large, pure white, marguerite-like flowers on long stems.

- 1470 Alaska. Giant blooms. Pkt. 15c; 1/4 oz. 60c.
1471 May Queen. Early bloomer. Pkt. 15c; 1/4 oz. 60c.

DELPHINIUM

The Delphinium or Perennial Larkspur produces tall, stately plants with immense flower-spikes in indescribably rich and varied shades of blue. Magnificent for enriching large borders and highly esteemed as a cut-flower. Delights in a rich, well-cultivated soil. Height 4 to 5 feet.

- 1475 Reuter's Hybrids, Mixed. Our own special blend of light and dark blue shades. Pkt. 25c; 1/4 oz. \$1.00.
1477 Wrexham Hybrids. Remarkable new English Hybrids, with individual blooms over 2 inches in diameter, produced on gigantic spikes. Very complete color-range. Pkt. 50c.



CORNFLOWER, Jubilee Gem DIANTHUS—Pinks

This group embraces some of our best-loved flowers for bedding and borders. They are unsurpassed for striking colors and profuse blooming. Do best in a sunny location. Height 1 foot.

- 1480 Chinese, Mixed. (Double Chinese Pinks.) Pkt. 10c; 1/2 oz. 45c; oz. 80c.
1484 Heddewigl Mixture. (Single Japanese Pinks.) Fringed flowers. Pkt. 15c; 1/2 oz. 50c; oz. 90c.
1487 Westwood Beauty. The color ranges from fiery crimson-red to a deep, velvety red. Pkt. 25c.

DUSTY MILLER

2740 Very decorative foliage plants with attractive, fern-like, silvery white leaves. Highly recommended for edging. Height 1 foot. Pkt. 15c; 1/4 oz. 50c.

FEVERFEW

1718 Double White. An upright grower with finely cut foliage and snow-white button-like flowers in clusters. Showy plants for mixed borders and cutting. Height 2 feet. Pkt. 30c; 1/4 oz. \$1.00.



PETUNIA, Ballerina—See Page 7



PORTULACA, Double-Mixed—See Page 7 COREOPSIS

Perennials of graceful appearance with large golden yellow flowers on long, slender, upright stems. Height 2 feet.
1390 Mayfield Giant. Immense; single; rich golden yellow. Pkt. 15c; 1/2 oz. 45c; oz. 80c.
1392 Double Sunburst. Wonderful new strain with well-filled, deep golden yellow flowers. Pkt. 15c; 1/4 oz. 35c; 1/2 oz. 60c.

CORNFLOWER

The sturdy plants carry an abundance of elegant, long-stemmed, double flowers. Highly valuable for cutting. Height 2 1/2 feet.

- 1350 Double, Mixed. Well blended. Pkt. 10c; 1/2 oz. 35c; oz. 60c.
1351 White 1352 Pink
1353 Dark Blue 1354 Carmine
Each: Pkt. 10c; 1/2 oz. 35c; oz. 65c.

- 1355 Jubilee Gem. Dark blue. Dwarf, compact grower. Pkt. 20c; 1/2 oz. 75c.
1358 Lilac Lady. Bright lilac mauve. Dwarf, compact grower. Pkt. 20c; 1/2 oz. 75c.

CYPRESS VINE

Dainty climber for fences and trellises. The delicate, fern-like, dark green foliage is decorated with small, star-shaped white and red blooms. Height 15 feet.

- 1436 Scarlet 1442 Mixture
Each: Pkt. 20c; 1/4 oz. 60c.
1445 Cardinal Climber. Large, cardinal-red flowers, borne in clusters. Pkt. 25c.



PETUNIA, All-Double Rose Marie—See Page 7



LARKSPUR, Supreme—See Page 6











# Glorious Spring BULBS

## FANCY-LEAVED CALADIUMS



**Hemerocallis—Excellent for Borders**  
**HEMEROCALLIS—Day-Lilies**

Highly decorative plants for borders and beds. The tall, stiff flower stems are raised freely over the foliage and bear conspicuous clusters of lily-shaped flowers in yellow and orange shades.

- 3290 *Bay State*. Large; deep yellow with petals attractively waved. Late bloomer. Height 3 feet. Each \$1.00; 6 for \$2.75; 12 for \$5.00.
- 3348 *Bijou*. A beautiful orange with an overcast of rich fulvous red. Height 2 feet. Each \$1.00; 6 for \$5.50; 12 for \$10.00.
- 3349 *Boutonnere*. Delightful light rosy-peach. Grassy green foliage. Height 3 feet. Each \$1.00; 6 for \$5.50; 12 for \$10.00.
- 3350 *Cinnabar*. Rosy red-brown petals with clear yellow throat. An early and long-blooming period. Height 2½ feet. Each \$1.00; 6 for \$5.50; 12 for \$10.00.
- 2265 *Florham*. Popular variety with clear golden yellow flowers. Midseason bloomer. Height 3 feet. 2 for 60c; 6 for \$1.65; 12 for \$3.00; 100 for \$20.00.
- 3292 *Gold Dust*. Empire-yellow blooms with bronze reverse. Dwarf, neat grower. Early bloomer. Height 2 feet. Each 50c; 6 for \$2.75; 12 for \$5.00.
- 3285 *J. R. Mann*. The color is an attractive frosted apricot. Late bloomer. Height 3 feet. Each 50c; 6 for \$2.75; 12 for \$5.00.
- 2244 *Kwanoo fl-pl.* Double Day-Lily with coppery orange blooms. Midseason bloomer. Height 3 feet. 2 for 60c; 6 for \$1.65; 12 for \$3.00; 100 for \$20.00.
- 3291 *Lemona*. Very fine; large; pale yellow. Late bloomer. Height 3 feet. Each 50c; 6 for \$2.75; 12 for \$5.00.
- 3284 *Mrs. W. H. Wyman*. Lovely pale glistening yellow. One of the finest. Late bloomer. Height 3 feet. Each 50c; 6 for \$2.75; 12 for \$5.00.
- 3351 *Old Vintage*. Extremely beautiful wine-colored petals with yellow throat. Height 2½ feet. Each \$1.00; 6 for \$5.50; 12 for \$10.00.
- 3352 *Pink Lustre*. Huge trumpet-shaped flowers of a lustrous soft pink with bright canary-yellow throat. Height 4 feet. Each \$1.00; 6 for \$5.50; 12 for \$10.00.
- 3353 *Purple Waters*. Extra-strong grower with flowers of a rich wine-purple color. Height 2½ feet. Each \$1.00; 6 for \$5.50; 12 for \$10.00.
- 2247 *The Gem*. Attractive, rich deep orange-yellow flowers. Mid-season bloomer. Height 3 feet. Each 50c; 6 for \$2.75; 12 for \$5.00.

The most showy, fascinating, and beautiful of all bright-colored foliage plants. They revel in many brilliant and soft colors, striking combinations, and indescribable beauties of design. Caladiums do extremely well planted outdoors in the Lower South. They prefer a partly shaded location. Cultural leaflet with every order.

Shipment will commence March 1 unless otherwise requested.

- 3246 *Condidam*. Transparent pure white, bordered green and with green ribs and veins.
  - 3248 *Crimson Wave*. Brilliant crimson-red center, bordered moss-green.
  - 3257 *Hortulania*. Brilliant crimson-red transparent center with narrow green border.
  - 3242 *Hocopus*. Very decorative with large, deep bronze-red leaves and narrow green border. Sometimes the leaves change to a lovely solid rose.
  - 3253 *Macahyba*. Large leaves profusely spotted transparent pink, on dark glossy green background. Showy garden variety.
  - 3256 *Mrs. W. B. Haldemann*. Attractive bright red leaves with narrow green border; interspaces mottled white.
  - 3244 *Marie Moir*. Large, pure white, glossy leaves with distinct green rib and veins irregularly spotted dark rose.
  - 3262 *Pocil Anglais*. The center is transparent crimson with bluish tint, bordered metal green.
  - 3268 *Scarlet Pimpernelle*. Bright red center with scarlet ribs contrasting strikingly against the creamy yellow border.
  - 3276 *Triomphe de l'Exposition*. Large bright crimson leaves on green background.
  - 3273 *Tom Tomlinson*. The color is a fine transparent brilliant red with narrow green border mottled white and green.
- All above: Each 45c; 6 for \$2.35; 12 for \$4.25; 100 for \$28.50.
- 3280 *Rainbow Mixture*. An extremely showy mixture carefully blended from our extensive assortment. Very striking for massing. Each 40c; 6 for \$1.90; 12 for \$3.50; 100 for \$25.00.



German Iris

### HOW TO GROW IRIS

German Irises require a well-drained, sunny location. Clay soils should be mixed to a depth of 1 foot with a liberal quantity of sharp sand. Do not plant too deep. The top of the rhizomes should be at ground-level. Use no fertilizer except Bone Meal, about a closed handful to each plant, and after planting, water thoroughly to settle soil. Cultivate the surface after each rain and water only when soil is dry. Remove old leaves as they wither sufficiently to pull them off. Proper distance between plants, 1 foot.

Louisiana Irises do equally well in sunny or partially shaded locations if properly watered. Clay soils should be loosened by spading in a liberal quantity of Peat Moss or you may use Krillium. Plant the roots about 4 inches deep and 1 foot apart.

### GERMAN IRIS

Popular group, with large, strikingly handsome flowers in an endless variation of beautiful colors. Bloom in late spring.

- 2282 *Ambassador*. The color is deep lavender with purple falls. Considered one of the best.
  - 2287 *Bosor*. A tall, sky-blue of immense size. A very fine variety.
  - 3343 *Caroline Burr*. Immense pure white Iris with perfectly shaped flowers of fine texture.
  - 2301 *Cheerio*. A red-toned bicolor with rose-flushed standards; ruby-red falls.
  - 3349 *China Maid*. Delicate soft pink. A beautiful Iris and one that should be in every garden.
  - 2286 *Crown Prince*. Velvety brownish red and gold with falls dark red. A prolific bloomer.
  - 3448 *Daxler*. A gorgeous deep rose of fine texture. A favorite with Iris lovers.
  - 2303 *Gloriole*. Large flowers with beautifully ruffled standards of a very soft lobelia-violet color. Falls same shade, with an almost imperceptible soft greenish flush.
  - 3345 *Golden Glow*. Early bloomer of a bright canary-yellow color. An unusually fine Iris.
  - 2285 *Indian Chief*. Deep violet-red with falls reddish purple. Very large flowers and a prolific bloomer.
  - 3344 *Jerry*. Bright dazzling red color with velvety maroon falls. Fine for cutting; early.
  - 2305 *Kalinga*. High Ivory-textured, cream-colored Iris with flaring falls.
  - 2283 *King Midas*. Golden buff and garnet-brown blend, with falls bordered darker brown.
  - 2307 *Rameses*. Lovely golden buff and rosy pink flowers. A great Iris of vigorous growth.
  - 2309 *Sacramento*. A giant Plicata. The ground is white heavily bordered with a feather-stitch edging of red-purple.
  - 2311 *Talisman*. Color of the world's most famous Talisman rose, a subtle blending of red, yellow, pink and chamois.
  - 2313 *Tiffany*. This Plicata is soft yellow, heavily sprayed bronze-rose.
- All above: Each 50c; 3 for \$1.25; 6 for \$2.25; 12 for \$4.00



Canna Border

### CANNAS

Cannas make brilliant borders and beds during the entire summer and fall. Their large, conspicuous clusters of orchid-like flowers add to the color scheme in the garden.

- 2170 *City of Portland*. A fine, stately Canna. Enormous trusses of handsome bright pink flowers contrasting with dark green foliage. Height 3½ feet. 2 strong roots 45c; 6 for \$1.10; 12 for \$1.85; 100 for \$12.50.
- 2175 *Copper Giant*. Gigantic, copper-red flower-heads slightly suffused rose. Green foliage. Height 4 feet. 2 strong roots 45c; 6 for \$1.10; 12 for \$1.85; 100 for \$12.50.
- 2168 *Eureka*. Large, impressive flower-heads of showy creamy white color. Dark green foliage. Height 4 feet. 2 strong roots 45c; 6 for \$1.10; 12 for \$1.85; 100 for \$12.50.
- 2176 *King Humbert*. Bright orange-scarlet flowers contrasting strikingly with its attractive bronze-colored foliage. Height 4 feet. 2 strong roots 45c; 6 for \$1.10; 12 for \$1.85; 100 for \$12.50.
- 2180 *King Midas*. Large-flowering, golden yellow Canna, wonderfully pure in color. Green foliage. Height 3½ feet. 2 strong roots 45c; 6 for \$1.10; 12 for \$1.85; 100 for \$12.50.
- 2172 *Mrs. Alfred Conard*. Extremely beautiful with gigantic trusses of lovely salmon-pink flowers. Unsurpassed in beauty and effect. Green foliage. Height 4 feet. 2 strong roots 45c; 6 for \$1.10; 12 for \$1.85; 100 for \$12.50.
- 2177 *The Ambassador*. Luxuriant, bronzy foliage and magnificent large trusses of brilliant cherry-red blooms. Height 4 feet. 2 strong roots 45c; 6 for \$1.10; 12 for \$1.85; 100 for \$12.50.
- 2182 *Yellow King Humbert*. Bright yellow flowers marked with contrasting crimson dots. Green foliage. Height 4 feet. 2 strong roots 45c; 6 for \$1.10; 12 for \$1.85; 100 for \$12.50.

### No. 3435 CANNA COLLECTION

2 strong roots each of the following:  
*Mrs. Alfred Conard*. Salmon-pink.  
*Ambassador*. Cherry-red.  
*Copper Giant*. Copper red.  
*King Midas*. Golden yellow.

for only **\$1.10**  
Postpaid

### LOUISIANA IRIS

Probably the easiest of all to grow in the South. Any ordinary garden soil, kept properly moist, will grow them to perfection.

- 3351 *Blue and Purple*
- 3356 *Lilac*
- 3354 *Light Lavender*
- 3352 *Russet Red*
- 3355 *Mixed Colors*
- 2317 *Yellow*

All above: Strong roots, 2 for 90c; 6 for \$2.50; 12 for \$4.25; 100 for \$28.00.

### No. 3400 6 GERMAN IRIS

One strong root each of the following choice Irises, separately labeled:

*Ambassador*. Deep lavender, falls purple;  
*Caroline Burr*. Immense pure white; *Crown Prince*. Red and gold; *Daxler*. Deep rose of fine texture; *Golden Glow*. Canary yellow; *Jerry*. Bright dazzling red.

for only **\$2.10**  
Postpaid

### G&O FOOD FOR BULBS

This bulb food is 5% Nitrogen, 6% Phosphorus and 15% Potash, and is formulated particularly with bulbs in mind. The high Potash content is because bulbous plants go "crazy" for excess Potash in much the same manner as roses and other acid-loving plants must have acid-forming plant food.

Prices: 2 lbs. 50c; 5 lbs. 85c; 10 lbs. \$1.45; 25 lbs. \$3.25. Postpaid prices: 2 lbs. 70c; 5 lbs. \$1.35; 10 lbs. \$2.20; 25 lbs. \$4.75.



Caladiums—Brightly Colored Leaves



# Graceful *Gladiolus*



Elizabeth, the Queen



Beacon

Gladiolus should be in every garden. They are easily grown and bloom early, with tall, graceful spikes in a gorgeous array of richest colors. Fine cut-flowers. Reuter's offers the world's best Gladiolus. (See page 12 for planting chart. Best months to plant are January and February.)

- 2344 *Maskerade*. Gorgeous yellow with impressive dark red blotch in throat. A good grower with blooms carried on strong stems. 3 for 35c; 6 for 65c; 12 for \$1.20; 100 for \$8.00.
- 3097 *Miss Wisconsin*. A rich brilliant rose-pink. Opens up to eight blooms on a medium-height spike. 3 for 40c; 6 for 70c; 12 for \$1.25; 100 for \$8.50.
- 2432 *Nancy*. A very beautiful bright scarlet-red that is early flowering. 3 for 40c; 6 for 70c; 12 for \$1.30; 100 for \$9.00.
- 2348 *Normandie*. Best salmon color. Large florets with conspicuous scarlet blotch. 3 for 35c; 6 for 65c; 12 for \$1.20; 100 for \$8.00.



- 2221 *Beacon*. Huge salmon-red with white throat. 3 for 35c; 6 for 60c; 12 for \$1.10; 100 for \$7.00.
- 2222 *Bit-O-Heaven*. Very large, orange with yellow throat. 3 for 35c; 6 for 60c; 12 for \$1.15; 100 for \$7.50.
- 2417 *Buckeye Bronze*. Large, clear, rosy ruffled blooms on tall spikes. 3 for 40c; 6 for 70c; 12 for \$1.25; 100 for \$8.50.
- 3100 *Burma*. A very deep reddish rose with wide-open, heavily ruffled blooms. Opens up to eight ruffled florets on straight spikes. 3 for 35c; 6 for 65c; 12 for \$1.20; 100 for \$8.00.
- 3340 *Chamouny*. A new shade of clear rich medium rose. 3 for 35c; 6 for 65c; 12 for \$1.20; 100 for \$8.00.
- 2236 *Dream of Beauty*. Gorgeous; large; rose-red, on tall, straight spikes. 3 for 35c; 6 for 65c; 12 for \$1.15; 100 for \$7.50.
- 2241 *Elizabeth the Queen*. The most distinctive lavender Gladiolus, with large ruffled blooms. 3 for 35c; 6 for 65c; 12 for \$1.20; 100 for \$8.00.
- 2223 *Ethel Cave-Cole*. New extra-large light pink. Early bloomer. 3 for 35c; 6 for 60c; 12 for \$1.15; 100 for \$7.50.
- 2340 *General Eisenhower*. A beautiful, vivid, pure rose with very strong, erect stems. One of the best. 3 for 35c; 6 for 65c; 12 for \$1.20; 100 for \$8.00.
- 3376 *Jules Amott*. A glistening deep carmine-red, borne on tall, straight spikes. 3 for 40c; 6 for 70c; 12 for \$1.25; 100 for \$8.50.
- 2430 *King Lear*. Immense ruffled rosy lavender of a distinct form and color. 3 for 35c; 6 for 65c; 12 for \$1.20; 100 for \$8.00.
- 2418 *Lantana*. Orange, shading through orange salmon with a golden throat. 3 for 40c; 6 for 70c; 12 for \$1.25; 100 for \$8.50.
- 2431 *Leading Lady*. A beautiful cream-white with canary-yellow throat. 3 for 35c; 6 for 65c; 12 for \$1.20; 100 for \$8.00.
- 2344 *Malay Chief*. Very large blackish maroon on tall, straight spikes. 3 for 40c; 6 for 70c; 12 for \$1.30; 100 for \$9.00.
- 2343 *Mansoer*. Majestic blood-red tinted velvety black. Strong spikes. 3 for 35c; 6 for 65c; 12 for \$1.20; 100 for \$8.00.

- 3094 *Oklahoma*. A superb smoky lilac, flushed rose, with a buff throat. Very fine quality. 3 for 50c; 6 for 90c; 12 for \$1.65; 100 for \$12.00.
- 2345 *Paul Rubens*. A rich reddish violet with magenta specks. A good, strong grower. 3 for 35c; 6 for 60c; 12 for \$1.15; 100 for \$7.50.
- 2232 *Picardy*. Enormous, delicate apricot-pink blooms delightfully ruffled. No garden should be without it. 3 for 35c; 6 for 60c; 12 for \$1.10; 100 for \$7.00.
- 2419 *Purple Supreme*. Tall bright purple flowers with a silvery edge on the petals. 3 for 40c; 6 for 70c; 12 for \$1.30; 100 for \$9.00.
- 2248 *Rosa Van Lima*. Wonderful large open, bright pink flowers on strong, straight spikes. 3 for 35c; 6 for 60c; 12 for \$1.10; 100 for \$7.00.
- 2341 *Salmon's Glory*. Huge, creamy white with carmine-red marks. One of the best. 3 for 35c; 6 for 65c; 12 for \$1.20; 100 for \$8.00.
- 2411 *Silentium*. Large; snow-white with orange-scarlet blotch in throat. Very attractive. 3 for 35c; 6 for 65c; 12 for \$1.20; 100 for \$8.00.
- 2420 *Silver Wings*. This is a white sport of Picardy with all the qualities of Picardy in a pure white flower. 3 for 40c; 6 for 70c; 12 for \$1.30; 100 for \$9.00.
- 2245 *Snow Princess*. One of the finest pure whites. Strong stems. 3 for 35c; 6 for 60c; 12 for \$1.10; 100 for \$7.00.
- 3087 *Spic and Span*. A wonderful deep pink with slight salmon shadings. A straight-growing, tall, rugged Gladiolus. 3 for 40c; 6 for 70c; 12 for \$1.30; 100 for \$9.00.
- 2412 *Spotlight*. A medium deep yellow with scarlet in throat. One of the best. 3 for 35c; 6 for 60c; 12 for \$1.15; 100 for \$7.50.
- 2261 *Stoplight*. Large, ruffled blooms of brilliant clear red, borne on tall, straight spikes. 3 for 35c; 6 for 65c; 12 for \$1.20; 100 for \$8.00.
- 3342 *Sweet Alibi*. Beautiful clear pink with heavily ruffled blooms. 3 for 35c; 6 for 65c; 12 for \$1.20; 100 for \$8.00.
- 3086 *Tahiti*. An outstanding bright rose-pink, lightening to clear pink to throat. 3 for 35c; 6 for 65c; 12 for \$1.20; 100 for \$8.00.

- 3079 *Tivoli*. A clear rose-pink, borne on tall upright stems. The blooms are well placed and of a soft texture. 3 for 40c; 6 for 70c; 12 for \$1.25; 100 for \$8.50.
- 2240 *Vagabond Prince*. A beautiful garnet-brown, blotched scarlet. Very good. 3 for 40c; 6 for 70c; 12 for \$1.25; 100 for \$8.50.
- 2433 *Valerie*. A large, bright light red of a distinctive shade. 3 for 35c; 6 for 65c; 12 for \$1.20; 100 for \$8.00.
- 2421 *White Gold*. A very large clear light cream shading to a golden throat. Tall and very vigorous. 3 for 35c; 6 for 65c; 12 for \$1.20; 100 for \$8.00.
- 2413 *Yellow Herald*. A beautiful amber-yellow with carmine in throat. The large flowers are borne on strong, upright stems. 3 for 35c; 6 for 60c; 12 for \$1.15; 100 for \$7.50.

### Protect Your Gladiolus

At the first sign of thrips, start spraying your Gladiolus with Deenate 75-W. Does not burn the foliage or flowers. A sure kill for thrips. Lb. \$1.15. Postpaid: Lb. \$1.25.

**Special Offer No. 3450**  
**20 GLADIOLUS—Glory Mixture**  
 All strictly first-size bulbs in a gorgeous blend of all colors. An extremely popular collection. **\$1.45** Postpaid

**Acidanthera, Abyssinian Gladiolus**  
 3085 Although not a true Gladiolus, this novelty resembles it very closely and should be handled in the same manner. The white flower with purple throat has an unusual and distinctive fragrance. Easily grown. Surprise your neighbors with this new flower. Plant a few bulbs this spring. 3 for 50c; 6 for 90c; 12 for \$1.65; 100 for \$12.00.



Picardy



Purple Supreme



Yellow Herald

**COLLECTION NO. 3420**  
**30 Prize-Winning GLADIOLUS**  
 3 bulbs each of the following varieties, individually bagged and labeled:  
*Buckeye Bronze*. Large, clear, rosy bronze.  
*Elizabeth, the Queen*. Clear, distinctive lavender.  
*Nancy*. Beautiful bright scarlet-red.  
*Picardy*. Enormous delicate apricot-pink.  
*Purple Supreme*. A vibrant purple superb cut flower.  
*Snow Princess*. One of the finest pure whites.  
*Tahiti*. Bright rose-pink with clear pink throat.  
*Valerie*. Distinctive bright light red.  
*White Gold*. Large, clear light cream with golden throat.  
*Yellow Herald*. Beautiful amber yellow with carmine in throat.

**TOP SIZE BULBS Only \$2.65** Postpaid



Valerie



Malay Chief



Gen. Eisenhower



REUTER'S SEEDS "Known for Quality"

# DAHLIAS

## Prize Winning

**ABBREVIATIONS: Dec., Decorative; C., Cactus; Semi-C., Semi-Cactus**

Our Dahlias embrace the finest selected varieties adapted to the South, and our list includes many outstanding and sensational introductions.

**Note:** Dahlias are tender to cold and bulbs should not be planted until danger of freezing weather has passed. In the extreme South, Dahlias bloom exceptionally well during the cool fall months. We recommend that bulbs wanted for fall blooming be set out during the latter part of May or the month of June.

2187 **Ambassador** (C.) Gigantic flowers of exquisite golden yellow blending to amber-salmon and coral-pink at tips. Each 90c; 3 for \$2.55.

2188 **Andreas Hefer**. (C.) Delicate rose-pink, shading to white at the center. One of the loveliest of all pink Cactus Dahlias. Each 65c; 3 for \$1.80.

2199 **Blue Moon**. (Dec.) Gigantic blue flowers of perfect form. An unusual color in Dahlias. Each 90c; 3 for \$2.55.

2354 **Commando**. (Dec.) An unusually large Dahlia of a bright clear shade of lavender. A good cutting variety. Each 75c; 3 for \$2.10.

2361 **D. M. Moore**. (Dec.) The nearest to black of any Dahlia yet developed. Decidedly different. Each 65c; 3 for \$1.80.

2351 **Essie Smith**. (Semi-C.) Very large flower of amaranth-pink; petals curl to the very end. Good strong stems. Each 90c; 3 for \$2.55.

2198 **Fire Chief**. (Dec.) A true bicolor of deep red tipped white. A very showy variety. Each 90c; 3 for \$2.55.

2203 **Forest Fire**. (Dec.) Petals lemon-yellow at base, heavily tipped rich scarlet. A strong grower with gigantic blooms on good stems. A most spectacular Dahlia. Each 90c; 3 for \$2.55.

2370 **Graf Zeppelin**. (Dec.) One of the finest pure white Dahlias for the South. Each 75c; 3 for \$2.10.

2360 **Jane Cowl**. (Dec.) Glistening bronzy buff and old-gold, deepening in shade toward the center. Gigantic blooms. Each 60c; 3 for \$1.65; 12 for \$6.25.

2354 **Jersey's Beacon**. (Dec.) Fine Dahlia with immense flowers of Chinese-scarlet, paler reverse giving a two-toned effect. Each 65c; 3 for \$1.80; 12 for \$6.50.

2193 **Jersey's Beauty**. (Dec.) The finest true pink Dahlia of perfect form. Each 60c; 3 for \$1.65; 12 for \$6.25.

2362 **Jersey's Orchid**. (Dec.) A rich, clear, bright orchid-lavender. One of the most beautiful Dahlias grown. Each 75c; 3 for \$2.10.

2363 **Jersey's White Beauty**. (Dec.) An outstanding clear white Dahlia. A good cutting variety. Each 75c; 3 for \$2.10.

2357 **Key Francis**. (Semi-C.) The large, attractively formed deep flowers are of a delightful soft lemon-yellow color. Each 75c; 3 for \$2.10.

2200 **Lord of Autumn**. (Dec.) A truly great Dahlia with giant, deep clear yellow blossoms. A constant prize-winner. Each 90c; 3 for \$2.55.

2197 **Mabel Hess**. (Dec.) Large, lovely deep crimson, shading to dark maroon. Extra-long stems. Each 75c; 3 for \$2.10.

2353 **Miss San Diego**. (C.) Incurved lacinated Cactus Dahlia of lemon-yellow; outer half of bloom tyrian pink. Very attractive and beautiful. Each \$1.00; 3 for \$2.85.

2205 **Mrs. I. de ver Warner**. (Dec.) Giant mauve-pink. Each 60c; 3 for \$1.65; 12 for \$6.25.

2216 **Murphy's Masterpiece**. (Dec.) Gigantic, massive, dark red and garnet blooms carried on strong cane-like stems. Each \$1.50.

2366 **Papillon**. (Semi-C.) A beautiful blending of watermelon-red to salmon-pink and old rose. Highly recommended. Each 65c; 3 for \$1.80.

2212 **Pride of California**. (Dec.) Popular, large, rich dark crimson on good stems. Each 60c; 3 for \$1.65; 12 for \$6.25.

2262 **Ronnie Lee**. (Dec.) An outstanding blend of scarlet-red and salmon shades. Large blooms on strong stems. Each \$1.00.

2217 **Rosa Nell**. (Dec.) Brilliant American Beauty rose color, a shade rare in Dahlias. Each 60c; 3 for \$1.65.

2367 **Ruby Taylor** (Dec.) The giant flowers are borne on long, stiff stems and are of an unusual clear carmine color. A very attractive Dahlia. Each 65c; 3 for \$1.80.

2368 **Rhythm**. (C.) Winner of many awards. The color is a soft cameo-pink suffused rose, shading to soft lemon center. Ea. \$1.50.

2206 **Saton**. (C.) Gigantic brilliant scarlet-red of outstanding quality. Each 75c; 3 for \$2.10.

2364 **Sunray's D**. (Dec.) Clear buff suffused apricot with reverse side of petals peach-red. A new introduction. Each 75c; 3 for \$2.10.

2209 **Thomas A. Edison**. (Dec.) Large, massive, royal purple flowers held erect on long, stiff stems. A very popular Dahlia. Each 75c; 3 for \$2.10.

2207 **White Wonder**. (Dec.) Giant pure white blooms composed of long, twisted and curled petals. One of the finest whites. Each 65c; 3 for \$1.80.



### DECORATIVE DAHLIAS—Jersey's Beauty, pink; Jersey's Beacon, scarlet; Jane Cowl, bronze

### MINIATURE DAHLIAS

These lovely new Dahlias produce miniature flowers that are true copies of the large-flowered Decorative, Cactus and Peony types. They are dwarf growers, very free flowering and fine for border planting.

- 2210 **Baby Royal**. Lovely salmon shaded apricot.
- 2211 **Bishop of Llandoff**. Brilliant deep scarlet-red.
- 2213 **Dolly**. A bright true lavender. A prolific bloomer.
- 2215 **Glorious**. Very showy raspberry-red.
- 2212 **Ike**. Dark velvety red, lacinated petals.
- 2218 **Little Jewel**. Pleasing deep pink.
- 2219 **Louisiana Red**. Brilliant red Dahlia of compact form.
- 2350 **Persimmon**. Attractive orange-flame color.
- 2220 **Sanhican Sweetheart**. Buff-apricot suffused pink. Very artistic color.
- 2377 **Teddy Johnson**. Apple-blossom-pink of medium form. A good bloomer.
- 2378 **White Cloud**. Pure white of perfect form.

Prices on all Miniature Dahlias: Each 60c; 3 for \$1.65.

### POMPON DAHLIAS

- 2374 **Burgundy**. Rich wine-red.
- 2373 **Flame**. Brilliant orange-red.
- 2370 **Helen Anita**. Lavender with white center.
- 2371 **Iolanthe**. Bright salmon.
- 2382 **Red Star**. Very bright flame-red.
- 2372 **Rosa Wilmouth**. Fine rose-pink.
- 2386 **Snowbird**. Small pure snow-white flowers.
- 2376 **Yellow Gem**. Very attractive light yellow.

Prices on all Pompon Dahlias: Each 50c; 3 for \$1.35.



Thomas A. Edison

If you wish to grow giant exhibition Dahlia blooms, disbud all but the one bud at the terminal.



Graf Zeppelin, white; Sunray's D, apricot

Collection No. 3440  
**5 POMPON DAHLIAS**  
 Only \$2.15 Postpaid

One strong, field-grown tuber each of the following, separately labeled and bagged:  
**Burgundy**. Wine-red.  
**Flame**. Orange-red.  
**Helen Anita**. Lavender, white center.  
**Iolanthe**. Salmon  
**Snowbird**. Pure white.

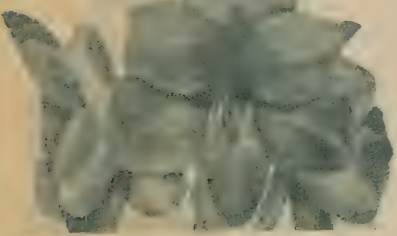
Collection No. 3425  
**6 GIANT DAHLIAS**  
 Only \$3.25 postpaid

Strong, field-grown, healthy tubers—one each of the following, separately labeled:  
**Commando**. Clear lavender.  
**Essie Smith**. Amaranth-pink.  
**Forest Fire**. Lemon-yellow, tipped scarlet.  
**Jersey White Beauty**. clear white.  
**Mabel Hess**. Crimson shaded dark maroon.  
**Thomas Edison**. Very showy large royal purple.



Murphy's Masterpiece

# Spring Flowering Bulbs



**Amaryllis, American Hybrid**  
**AMARYLLIS**

Easy-to-grow, large, lily-shaped flowers in brilliant, contrasting colors on heavy, stiff stems.  
 2150 Johnsoni (St. Joseph Lily). Bright crimson with broad white stripes. Strong bulbs: Each 45c; 6 for \$2.25; 12 for \$4.25.  
 2151 American Hybrids, Mixed. Enormous, broad-petaled flowers in a wealth of glorious colors. Mammoth bulbs: Each 60c; 6 for \$3.35; 12 for \$6.00.  
**Something for the Amaryllis Fancier**  
 2155 Pure White. The giant, pure white blooms remind one of an Easter Lily. Each \$3.50.  
 2156 Brilliant Red. Enormous flowers ranging from bright red to deep crimson. Each \$3.25.  
 2459 American Express. Orange-scarlet. Each \$4.00.  
 2462 Doris Lillian. Fuchsia colored. Each \$8.50.  
 2461 Fidelity. Pinkest rose. Each \$4.50.  
 2463 Malley. Orange-red. Each \$5.00.  
 2456 Ludwig's Scarlet. Dark scarlet. Each \$3.50.  
 2460 Nivalis. Enormous pure white. Each \$4.00.  
 2458 Pres. Roosevelt. Dark red. Each \$3.50.  
 2457 Salmon Joy. Gorgeous salmon. Each \$4.00.

**AGAPANTHUS**  
**Blue Lily-of-the-Nile**

2149 Highly decorative plants with amaryllis-like foliage and large heads of bell-shaped flowers of attractive bright blue color. Splendid for growing in pots or large tubs. Plant also in pots sunk into the ground when used for garden decoration, as they bloom better when root-bound. Blooms in late spring. Strong roots: Each 95c; 6 for \$4.50; 12 for \$8.50.

**BUTTERFLY LILY**

2280 Resembles cannas in growth. Produces large clusters of snow-white flowers like white butterflies, and of delightful fragrance. Prefers rich, moist soil. Blooms all summer and fall. Strong roots: 2 for 45c; 6 for \$1.10; 12 for \$2.00.



*Lilium philippinense*

**CALLA LILIES**

Immense, popular and highly decorative pot-plants with large, showy, funnel-shaped flowers. In the extreme South they may be planted in open ground in a protected place.

- 2267 *Baby White Calla*. Lovely miniature Calla Lily with dainty small white flowers. Each 45c; 6 for \$2.25; 12 for \$4.25; 100 for \$26.00.
- 2269 *Aethiopica*. The largest and finest pure white Calla Lily. Each 45c; 6 for \$2.25; 12 for \$4.25; 100 for \$26.00.
- 2270 *Golden Yellow*. Large, golden yellow flowers. Leaves profusely spotted silvery, white. Each 45c; 6 for \$2.25; 12 for \$4.25; 100 for \$26.00.
- 2279 *Pink Calla*. Very unusual, dwarf Calla. Flowers are rose-pink changing to carise. Each 50c; 6 for \$2.75; 12 for \$5.00; 100 for \$30.00.



*Calla Lily, Golden Yellow*

**CREOLE EASTER LILY**

2275 Finest of all Easter Lilies for the garden. Strong growers with gigantic pure white flowers of unusually heavy texture. Well-grown plants often produce 10 to 15 blooms to the stalk. 2 for 70c; 6 for \$1.85; 12 for \$3.50; 100 for \$22.00.

**CRINUMS**

Beautiful old-fashioned southern lilies with immense, drooping clusters of funnel-shaped flowers borne on tall, strong stems. Very showy in mixed borders or planted in front of tall shrubbery.

- 2152 *Giganteum*. Magnificent pure white. Each 65c; 6 for \$3.50; 12 for \$6.50.
- 2153 *J. C. Harvey*. Large clusters of drooping rose-pink flowers. Each 60c; 6 for \$3.25; 12 for \$6.00.
- 2154 *Mrs. Bosanquet*. Beautiful deep glowing rose color. The finest of all Crinum and worthy of a place in every garden. Blooming-size bulbs: Each 60c; 6 for \$3.25; 12 for \$6.00. Mammoth bulbs: Each 90c; 6 for \$5.00; 12 for \$9.00.

**GINGER LILY**

2268 Showy plants with fresh green, oval leaves, 2 feet tall. The flowers appear on pineapple-shaped heads hidden among the foliage on 1-foot stems. The color is a blend of white, lavender-pink and yellow. Strong roots: 2 for 65c; 6 for \$1.45; 12 for \$3.00.

**GLORIOSA—Glory Lily**

2281 *Rothschildiana*. Tender climber producing waxy, lily-like flowers with crimson perianth, banded gold. Prominent stamens. Prefers sunny location. Roots are winter killed and should be dug when foliage dies down and replanted in the spring. Each \$1.35; 6 for \$7.25; 12 for \$13.50.

**ISMENE—Peruvian Daffodil**

2305 Fine, easily grown, spring-flowering bulbs. The stout stems carry handsome clusters of large, showy, pure white and exceedingly fragrant blooms with greenish markings. Will bloom a few weeks after planting. Splendid for mixed borders. Strong bulbs: Each 50c; 6 for \$2.75; 12 for \$5.00; 100 for \$33.00.

**LYCORIS AUREA**

2274 Rare and attractive flower. In growth and formation of bloom it is identical to the nerines, but plants are stronger and the golden yellow flowers are larger. Fine for borders and rock-gardens. Strong bulbs: Each \$1.00; 6 for \$5.50; 12 for \$10.00.

**NERINE—Guernsey Lily**

2290 Lovely deep coral-pink flowers composed of long, narrow, separated petals. Stamens extend fully 2 inches from the base of the flower, giving it a striking and odd appearance. Beautiful for rock-gardens. Plant in spring when foliage dies. Strong bulbs: 2 for 45c; 6 for \$1.10; 12 for \$1.85; 100 for \$12.00.

**PEONIES**

Gorgeous border plants for middle and upper South. Require a good, rich, deeply worked soil. In planting, do not cover crown of roots more than 2 inches.

- 2291 *Edulis superba*. Rose-pink.
- 2292 *Festiva maxima*. Paper-white.
- 2293 *Floral Treasure*. Salmon-pink.
- 2294 *Karl Rosenfeld*. Crimson-red. Strong roots: Each 90c; 6 for \$4.75; 12 for \$9.00.

2272

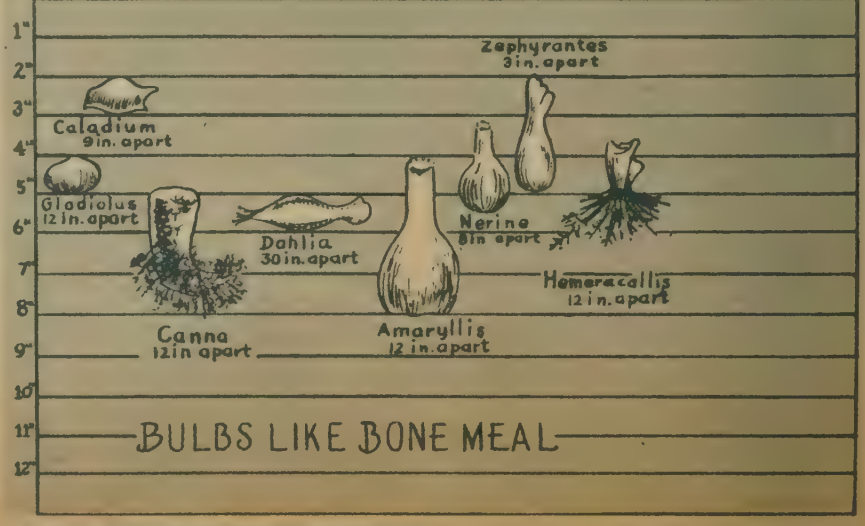
*L. speciosum magnificum*. Large, showy white flowers suffused rosy red and profusely spotted blood-red. One of the most attractive of the hardy Lilies. Large bulbs: Each 50c; 6 for \$2.75; 12 for \$5.



*Lilium tenuifolium*

- 2273 *Lilium tigrinum*. (Tiger Lily). Showy, giant, bright orange-red flowers, spotted black. Thrives especially well in the South. Strong bulbs: Each 50c; 6 for \$2.75; 12 for \$5.00.
- 2278 *Lilium philippinense*. Immense, pure white, trumpet-shaped flowers, occasionally tinted reddish purple; delightfully fragrant. Each 45c; 6 for \$2.25; 12 for \$4.25.

**BULB PLANTING CHART**



*Creole Easter Lily*

**SPREKELIA—Jacobean Lily**

2296 Attractive bulbous flowers producing oddly shaped blooms composed of long, narrow petals. The color is a brilliant crimson. Makes fine pot-plants. Large bulbs: Each 55c; 6 for \$3.00; 12 for \$5.25; 100 for \$35.00.

**TUBEROSES**

2295 *Mexican Everblooming*. Single-flowering. A very prolific bloomer with large spikes thickly set with pure white, very sweet and fragrant flowers. Bulbs: 6 for 80c; 12 for \$1.45; 100 for \$9.00.

**HARDY GARDEN LILIES**

Beautiful, fragrant and easy to grow. Excellent effects can be obtained by massing them in beds and borders.  
 2271 *Lilium auratum*. (Golden-banded Lily of Japan). Large white flowers beautifully dotted crimson, with golden yellow band through center of each petal. Strong bulbs: Each 50c; 6 for \$2.75; 12 for \$5.00.

2277 *Lilium regale*. (Royal Lily of China). Blooms freely, producing large, trumpet-shaped, delicately scented white flowers, slightly suffused with pink, with a beautiful shade of canary-yellow at center. Large bulbs: Each 45c; 6 for \$2.25; 12 for \$4.25; 100 for \$26.00.

2276 *Lilium tenuifolium*. (Coral Lily). Dainty Lily about 1 1/2 feet high, carrying numerous, tiny, waxy blooms of delightful coral-red color. Exceedingly graceful and very popular for rock-gardens. Bulbs: 2 for 60c; 6 for \$1.50; 12 for \$2.50; 100 for \$17.50.

**ZEPHYRANTHES**

**Fairy or Rain Lilies**

Delightful small plants with long, narrow foliage and lily-shaped flowers. They grow equally well in sun or partial shade, but should be given plenty of water.

- 2298 *Rosea*. Large, clear, rich rose. Bulbs: 3 for 25c; 6 for 40c; 12 for 75c; 100 for \$5.00.
- 2299 *Yellow*. Pure golden yellow. Bulbs: 3 for 25c; 6 for 40c; 12 for 75c; 100 for \$5.00.
- 2300 *Candida*. Pure white. Bulbs: 6 for 30c; 12 for 50c; 100 for \$3.25.



*Lilium tigrinum*



REUTER'S SEEDS "Known for Quality"

# Camellias

Stately and beautiful shrubs with handsome, dark green, glossy foliage and exquisite, large, waxy-tinted flowers in delicate soft and bright colors. Blooms during the late winter and early spring when gardeners lack color.

## STRONG YOUNG PLANTS

**Alba Plena.** Large, pure white, very double. Most popular of all white Camellias. Very early bloomers.  
**Chandleri Elegans.** One of the largest and most beautiful variegated pink and white varieties. It is of the peony type, with the stamens prominently displayed.  
**Laurel Leaf.** Full double with a salmon-pink center, shading to deeper rose on the tips of the incurved petals.  
**Pink Perfection.** Prolific bloomer with perfectly formed, very double flowers of clear shell-pink. One of the most common and popular varieties. Starts blooming when quite young.  
**Pope Plus (Prince Eugene Napoleon).** Very double flowers of exquisite scarlet. The blooms are of good size and the plant is a good, compact grower.  
**Professor C. S. Sargent.** The heavy, peony-formed blooms are of a beautiful dark crimson color. It is a hardy and prolific bloomer. The plant is vigorous, compact and symmetrical in growth.

All above: Healthy young pot-grown plants, \$1.10 each; 6 for \$6.00, your choice, postpaid.



CHANDLERI ELEGANS

**NOTE** Camellias are not available for shipment until February.

**Please Note:**  
Due to high cost of packing material no plant orders accepted under \$1.

## RARE VARIETY CAMELLIAS

Healthy, young, pot-grown plants

**Debutante.** Beautiful large peony type of solid pink. Plant very vigorous and compact in growth. Each \$1.50, postpaid.

**Glen "49."** One of the finest varieties. Large deep red, very double and with numerous rounded petals. Beautiful and lasting. Each \$1.50, postpaid.

**Lady Jane Gray.** Very large semi-double flowers with broad petals of red and marbled white. Each \$1.50, postpaid.

**Purple Dawn.** One of the finest varieties on the market. The large rose-shaped flowers are perfectly formed and are of a deep red color turning to purple. Each \$1.75, postpaid.

**Rose Dawn.** The large, rose-pink flowers are very double, similar in form and shape to Alba Plena. Each \$1.50, postpaid.

**Woodville Red.** Very large, brilliant red, peony type. Fast, upright grower. One of the newer varieties. Each \$1.75, postpaid.



PURPLE DAWN  
Camellia

# Azaleas

Great favorites in Southern gardens and easy to grow if the soil is properly prepared at planting time. They require an acid soil, and in sections where this condition does not prevail, natural muck or Peat Moss should be added together with about a pound of Aluminum Sulphate per square yard, and mixed thoroughly into the soil. During hot, dry weather they should be watered or syringed frequently.

## INDIAN AZALEAS

The most popular group, with flowers measuring 3 to 4 inches across. They vary in habit, some being spreading, others more compact.

**Fielder's White.** An early-blooming, large, pure white variety. A strong grower.

**Fisher Pink.** Light pink. Blooms about the same time as Pride of Mobile. Very good, compact grower.

**Formosa.** Very fast grower with large, purplish pink flowers. Big dark green leaves.

**George L. Taber.** A sport of Formosa. Fast grower; light green foliage. Pink and white variegated.

**Pride of Mobile.** A brilliant shade of watermelon-pink. An outstanding variety and a fast grower.

**Southern Charm.** A pink sport of Formosa. Fast grower.

Postpaid: Healthy young plants, 6 to 8-inch stock, 25c each;

6 for \$1.35; 12 for \$2.50.

Available for March-April shipment only.

## KURUME AZALEAS

Dwarf, compact grower with small flowers in dense clusters.



ALLEGRO

**Christmas Cheer.** Deep crimson with small shily leaves.

**Coral Bells.** Dainty bell-shaped pink flowers.

**Mindegirl.** The fiery red flowers cover the entire plant.

**Salmon Beauty.** Double, large; salmon color.

**Snow.** Beautiful double white. Very popular.

**Sweetheart Supreme.** Medium-sized, bluish-pink flower resembling a sweetheart rose. An excellent grower.

Postpaid: 4 to 6-inch stock, 25c each; 6 for \$1.35; 12 for \$2.50.

Available for March-April shipment only.



PRIDE OF MOBILE



FIELDER'S WHITE



FORMOSA



DEBUTANTE  
Camellia

# Chrysanthemums

Ready for Shipment About April 15th

Plant liberally of Chrysanthemums this spring. They are easy to grow and no other flower will give you such a lavish profusion of colorful blooms during the fall months.

### Pompon

**Allegro.** Glowing shrimp-pink suffused with coppery salmon. Very good bloomer.  
**Avalanche.** Large, pure white pompon with yellow center. A late-blooming variety.  
**Carnival.** Vividly blazing burnt-orange and bronze. Fully double. Early.  
**Firebird.** A lovely reddish bronze of medium size. Early.  
**Fireside.** Double; burnt-orange.  
**Forward.** A dainty pinkish Mum that is everybody's favorite.  
**Goldmine.** Free-blooming pompon of brilliant golden yellow.  
**Indiana.** An exquisite Chrysanthemum of carmine-red tinted gold at center.  
**Lillian Doty.** An excellent large pink pompon when disbudded. Will bloom November 1.  
**Marquerode.** A mid-sized flower, indescribable silvery rose, darker eye in center.  
**Mrs. du Pont.** Double; coral-buff.  
**Red Velvet.** Rich velvety crimson. Flowers fully double.  
**Silverplate.** One of the finest whites.  
**Spellbound.** Attractive light lavender.

### Single-flowering

**Brocade.** A lively cameo-pink that blooms in November.  
**Rajah.** Scarlet-red with yellow center.  
**The Titan.** Tall-growing; scarlet. Perfect flowers.  
**Valencia.** A beautiful shade of orchid-pink.  
**White Valencia.** Very large, clear white with yellow center.

### Large-flowering

**Ambassador.** Large, white, incurved flowers. Early bloomer.  
**Blazing Gold.** Deep golden yellow. Also an excellent pot-plant.

**Gitters.** Large, reddish bronze. An early bloomer.

**Pink Chief.** Very large, lavender. Should bloom November 1. Very fine.

**Silver Sheen.** Very large, pure white. An early bloomer.

**Yellow Ambassador.** Very large, lemon-yellow flowers.

## Chrysanthemum Collection

1 strong pot-grown plant each of the 5 Chrysanthemums listed below:

**Fireside.** Burnt-orange.  
**Mrs. du Pont.** Coral-buff.  
**Rajah.** Scarlet-red, yellow center.  
**Silverplate.** Finest white.  
**Spellbound.** Attractive light lavender.

ONLY \$7.80 Postpaid

### Postpaid Pot-Grown Chrysanthemum Plants

3 for	.....	\$1.20
6 for	.....	2.25
12 for	.....	4.00
Not Prepaid		
100 for	.....	\$26.00



MASQUERADE





DEPENDABLE

# ORTHO

SCIENTIFIC PEST CONTROL

PRODUCTS FOR HOME AND GARDEN

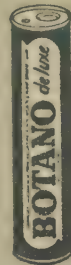
### BUG-GETA Pellets



Compressed metaldehyde Arsenical bait to kill slugs, snails, cutworms and grasshoppers. Easier to use, cleaner to handle, more economical, lasts longer than old-type meal baits. Broadcast baits in evening and sprinkle with water, 12 oz. 50c; 2 lbs. \$1.00; 5 lbs. \$2.00.

Postpaid prices: 12 oz. 60c; 2 lbs. \$1.20; 5 lbs. \$2.50.

### BOTANO De Luxe



Contains Lindane, Methoxychlor, Ferbam, Ziram. A truly fine multi-purpose garden dust to control Aphids, Thrips, Caterpillars, Sowbugs, Earwigs, Ants, Japanese Beetles, Diabrotica Beetles, Black Widow Spiders, Wireworms, Sod Webworms; and plant diseases — Black Spot, Leaf Spot, Powdery Mildew and Rust. Also controls a wide variety of soil insects. 8 oz. \$1.00; 2 lbs. \$1.95.

Postpaid prices: 8 oz. \$1.05; 2 lbs. \$2.15.

### ORTHO-KLOR Garden Dust



Contains 5% Chlordane. Kills ants, lawn moths, earwigs, cutworms, sowbugs, Japanese beetles and many other pests. 1 lb. 55c; 5 lbs. \$1.75. Postpaid prices: 1 lb. 65c; 5 lbs. \$2.25.

### ORTHO-GRO



A liquid plant food containing organic fish in a balanced fertilizer formulation. It is fast and all-available to the roots and foliage, giving quick plant response, 10-5-5 formulation. Excellent for all plants, shrubs and lawns. 4 oz. 35c; 16 oz. 90c; 32 oz. \$1.50; 1 gal. \$4.95. Postpaid prices: 4 oz. 40c; 16 oz. \$1.00; 32 oz. \$1.70; 1 gal. \$5.75.

### Improved ISOTOX Garden Spray M



A truly fine insect spray containing Lindane, DDT, and Malathion. Kills aphids, box elder bugs, bagworms, Japanese beetles, lacebugs, lawn moth armyworms, mole crickets, white grubs, chinch bugs, cutworms, earwigs, ants, thrips, flies, wireworms and many other pests. Residual kill up to two weeks. 4 oz. \$1.00; 8 oz. \$1.75; 16 oz. \$2.95. Postpaid prices: 4 oz. \$1.05; 8 oz. \$1.80; 16 oz. \$3.10.

### ORTHORIX SPRAY



A fine year-round spray containing 26% calcium polysulfide. For control of summer problems: such as: Powdery Mildew, Black Spot, Rust and Red Spider Mites; and dormant problems, such as: Scab, San Jose Scale, Rose Scale, Oyster Shell Scale, Black Scale, Brown Apricot Scale, Peach Rust, Peach Leaf Curl, Blight and overwintering insect eggs. Also an excellent soil corrective. 4 oz. 50c; 16 oz. \$1.00; 32 oz. \$1.65; 1 gal. \$4.50.

Postpaid prices: 4 oz. 55c; 16 oz. \$1.10; 32 oz. \$1.85; 1 gal. \$5.30.

### ORTHO Rose Dust



Contains Lindane, DDT, Ferbam and Sulphur. The finest multi-purpose Rose and Flower garden dust or wettable powder on the market, for the control of most insects, such as: aphids, Japanese beetles, thrips, caterpillars, lace bugs, rose weevils; and plant diseases, such as: black spot, powdery mildew, leaf spot and rust. Also controls a wide variety of soil insects. 8 oz. \$1.00; 1 lb. \$1.25. Postpaid prices: 8 oz. \$1.05; 1 lb. \$1.35.

### SPRAY-ETTE Garden Hose Sprayer



The modern garden hose-type sprayer for spraying ORTHO Insecticides and Fungicides, including ORTHORIX Spray, ISOTOX Garden Spray, VOLCK Oil Spray, etc. Each \$2.95. Postpaid price: Each \$3.10.

### ORTHO Lawn Sprayer



Handy, easy-to-use garden hose sprayer. Use to apply ORTHO-GRO Liquid Plant Foods to lawns, shrubs, vegetables, fruit trees, etc. Also use to apply lawn moth controls such as ISOTOX Garden Spray and ORTHO-KLOR "44" Spray. The water pressure does the work and makes both jobs simple and easy. Each \$3.75. Postpaid price: Each \$3.85.

### VOLCK Oil Spray



A highly refined insecticide spray carrier for use against mealybugs, scale insects, red spiders, and white flies on plants. This fine product also acts as an excellent leaf polish. 4 oz. 35c; 16 oz. 75c; 32 oz. \$1.25; 1 gal. \$3.00. Postpaid prices: 4 oz. 40c; 16 oz. 85c; 32 oz. \$1.45; 1 gal. \$3.80.

### Improved WEED-B-GON



The Hormone Weed Killer, containing 2,4-D and 2,4,5-T low volatile esters for use against poison oak, poison ivy, bindweed or wild morning glory, dandelion, plantain. Use on grass lawns for broad-leaved weed control. 4 oz. 50c; 16 oz. \$1.50. Postpaid prices: 4 oz. 55c; 16 oz. \$1.60.

### TRIOX Weed Killer



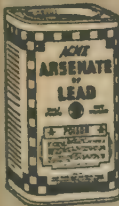
An Arsenical Weed Killer. Used to sterilize the soil and kill weeds. Prevents plant growth around patios, walks, driveways, etc., under proper conditions up to two years. 32 oz. \$1.00; gal. \$3.50. Postpaid prices: 32 oz. \$1.20; gal. \$4.30.

## FLOWERS SHRUBS

# ACME INSECTICIDES FUNGICIDES—WEED KILLERS

## FRUITS VEGETABLES

### ACME Arsenate of Lead



Thoroughly reliable in killing eating insects which destroy foliage and attack fruits. Safe to use on tender foliage. When worked into lawns and other turf, grubs, worms, etc., are killed and the turf "proofed" against insects for some years. Treatment discourages germination of crabgrass seeds. 1 lb. carton 70c; 1 lb. bag 65c; 4 lbs. \$1.80. Postpaid prices: 1 lb. carton 80c; 1 lb. bag 75c; 4 lbs. \$2.20.

### ACME Bordeaux Mixture



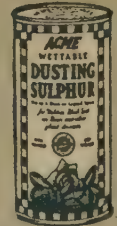
This mixture is the standard copper fungicide that has given fine satisfaction for over a hundred years. Controls many diseases on fruit trees (including peach leaf curl), vegetables, flowers and shrubs. As Bordeaux is a preventative, spraying should start early before fungus spores gain foothold. 1 lb. 55c; 4 lbs. \$1.35. Postpaid prices: 1 lb. 65c; 4 lbs. \$1.75.

### ACME EMO-NIK



A pleasant-to-use flower garden spray—also for house plants and ornamental shrubbery. Leaves no unsightly residue yet very effective in controlling ravages of Aphid, Red Spider, Thrips, Midges, White Flies, Lace Bugs, Mealy Bugs, Soft and Armored Scale. A great value for the price. 4 1/2 oz. 45c; 16 oz. 90c; 32 oz. \$1.40; gal. \$3.50. Postpaid prices: 4 1/2 oz. 50c; 16 oz. \$1.00; 32 oz. \$1.60; gal. \$4.30.

### ACME Dusting Sulphur



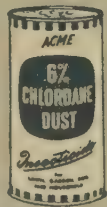
Mildews and many other fungus diseases as well as certain mite insects just can't stand sulphur. Light dustings (or sprayings) furnish a protective coating on roses and many other foliage plants against Mildew and Spot. Effective against Red Spider and certain Mites on evergreens, legumes, deciduous and citrus fruits. 2 lbs. 60c. Postpaid price: 2 lbs. 80c.

### ACME All Round Spray



For the gardener who cares. All Round Spray gives highest degree of protection to costly flowers, fruit trees, shrubs and vegetables from ravages of insects and blight. Combining two insecticides and two fungicides, if used regularly, one or more of the active elements are always at work. 1 lb. \$1.10; 4 lbs. \$3.50. Postpaid prices: 1 lb. \$1.20; 4 lbs. \$3.90.

### ACME 6% Chlordane Dust



A sure ant killer. On lawns—for ants, chiggers, chinch bugs, grubs and sod webworm. In gardens—for cutworms, earwigs, mole crickets, sowbugs, millipedes and leaf-cutting ants. In the soil—for wireworms, Japanese beetle grubs, white grubs and root maggots. So easy to apply from 1-lb. sifter top carton. 1 lb. 60c; 4 lbs. \$1.50. Postpaid prices: 1 lb. 70c; 4 lbs. \$1.90.

### ACME 5% Lindane Spray



Extra satisfaction in killing insects with this new super killing insecticide for fast control of Aphids, Thrips, Plant Bugs, Caterpillars and most all common beetles and bugs infesting azaleas, roses, other flowers, shrubs, vines, fruit, and vegetables. Kills three ways: by contact, with vapors and as an internal poison. 4 oz. 75c; 16 oz. \$2.40. Postpaid prices: 4 oz. 80c; 16 oz. \$2.50.

### ACME LIME SULFUR (Dry)



Containing 65% Calcium Polysulfides, it is a very valuable spray against many insects as well as some important fungus infections. It is a favorite spray in control of Scale, Mites, Peach Leaf Curl, Mildew on fruit trees, berry bushes, and as clean-up spray on roses. 1 lb. 70c; 5 lbs. \$2.50; 12 1/2 lbs. \$3.15. Postpaid prices: 1 lb. 80c; 5 lbs. \$3.00; 12 1/2 lbs. \$4.10.

### ACME DIMITE



Red Spiders and other mites often ruin evergreens, stunt blossoms and can even destroy fruit crops. These tiny forms, hardly distinguishable with the naked eye, reproduce in such unbelievable numbers that they can raise havoc by sucking juices from the host plant. Acme Dimite kills mites quickly and gives protection for several weeks. 2 oz. 70c; 8 oz. \$1.90. Postpaid prices: 2 oz. 75c; 8 oz. \$2.00.

### ACME Duradust #50



A finely divided, wettable powder containing 50% technical DDT. Has many uses in control of insects in the garden, on fruit trees and in out-buildings. Kills both sucking and chewing insects on foliage, houseflies and mosquitoes by wall treatment. Most economical form to buy DDT. 1 lb. 90c; 4 lbs. \$1.70. Postpaid prices: 1 lb. \$1.00; 4 lbs. \$2.10.

### ACME WEED KILLER



Kills plant life and sterilizes soil. An arsenical weed killer, powerful and quick acting. Destroys weeds and unwanted vegetation on driveways, parking areas, clay courts, paths, fence rows, etc. Will not stain stone or concrete. 1 gallon covers 450 square feet. Small quantity will kill unwanted trees. Not for lawns or cultivated soil. Pt. 65c; qt. 90c; gal. \$2.40. Postpaid prices: Pt. 75c; qt. \$1.10; gal. \$3.20.

### ACME STOP



A sticky compound to band adult thick-barked trees to prevent insects such as Wingless Female Gopher Worm Moth from crawling up the tree to lay eggs. Large trees are difficult for the average home owner to spray, so "Stop" furnishes a simple, effective remedy. 1 lb. \$1.05; 7 1/2 lbs. \$6.25. Postpaid prices: 1 lb. \$1.15; 7 1/2 lbs. \$7.00.





REUTER'S SEEDS "Known for Quality"

# REUTER'S GARDEN SUPPLIES

**Black Leaf 40.** Nicotine solution for destroying aphids, thrips, sucking insects, also kills poultry lice. One ounce makes 6 gallons spray. Oz. 36c; 5 oz. \$1.05; lb. \$2.42; 2 lbs. \$4.15; 5 lbs. \$7.60. Postpaid prices: Oz. 40c; 5 oz. \$1.15; lb. \$2.55; 2 lbs. \$4.25; 5 lbs. \$8.10.



**Boreol.** An excellent ether non-oil emulsion for the elimination of borers from trees and shrubs. Easy to use. 4 oz. 45c; 8 oz. 80c; pt. \$1.30; qt. \$2.10. Postpaid prices: 4 oz. 50c; 8 oz. 90c; pt. \$1.40; qt. \$2.30.

**Chlordane 74% Emulsifiable.** Excellent for soil insects, ants, grasshoppers, thrips, squash bugs, Lygus bugs etc. Newest use is for control of house termites. One treatment of animals will cure sarcoptic mange and will kill lice, fleas and ticks. 3 oz. \$1.00; 8 oz. \$1.95; pt. \$3.25; qt. \$5.95. Postpaid prices: 3 oz. \$1.00; 8 oz. \$2.00; pt. \$3.35; qt. \$6.15.



**Dogsuff.** Protects your plants from dogs, cats, moles, mice, rabbits, etc. Not harmful to plant life. Simply spray on plants. No mixing. 3-oz. bottle 75c. Postpaid price: 3-oz. bottle 80c.

**DDT 50% Wettable.** A highly concentrated wettable powder containing 50% DDT. For spraying crops use 1 to 2 pounds to 100 gallons of water. 1-lb. can 90c; 4-lb. bag \$1.75. Postpaid prices: 1-lb. can \$1.00; 4-lb. bag \$2.15.

**Fermate.** A new fungicide used to control plant diseases. Can be used on all varieties of plants. Fermate is the only available fungicide which can be used in combination with oil-lead arsenate or oil-nicotine sprays. It does not cause severe chemical rusting on certain varieties of peas and apples, as frequently results from the use of many copper fungicides. 1/2 lb. 75c; 3-lb. bag \$2.50. Postpaid prices: 1/2 lb. 80c; 3-lb. bag \$2.80.

**Control Azalea Petal Blight**  
Wonder Fungicide. Contains Dithane. Controls azalea petal blight, black spot and mildew on roses, gladiolus, camellias and vegetable plants, such as tomatoes, peppers, etc. 4 oz. 45c; pt. \$1.40. Postpaid prices: 4 oz. 50c; pt. \$1.50.

**Grafting Wax.** A specially prepared wax to be used for pruning and grafting purposes. 1/4 lb. 35c; 1/2 lb. 50c; lb. 80c. Postpaid prices: 1/4 lb. 45c; 1/2 lb. 65c; lb. 95c.

**50% Malathion.** Black Leaf 50% Malathion. An entirely new and revolutionary spray for mites. Controls European red mites, two spotted mites, pacific mites and many others. 1 oz. 49c; 5 oz. \$1.39; pt. \$2.98; qt. \$5.29. Postpaid prices: 1 oz. 55c; 5 oz. \$1.45; pt. \$3.10; qt. \$5.50.

**Rootone.** A root-forming stimulant. When applied to cuttings, seeds or bulbs it promotes root-forming in much shorter time and minimizes the loss due to slow rooting or sprouting. Postpaid prices: 1/4 oz. 25c; 2 oz. \$1.00; lb. \$5.00.

**Wonder Garden Spray.** Contains Pyrethrum and Rotenone plus DDT. An all-purpose, safe, efficient and economical garden and greenhouse spray. Will not burn open blooms. 2 1/2 oz. 45c; 4 oz. 70c; 8 oz. \$1.15; qt. \$3.50. Postpaid prices: 2 1/2 oz. 50c; 4 oz. 75c; 8 oz. \$1.20; qt. \$3.70.

**WEED KILLERS**  
**Ammate.** This weed killer has been field-tested during the past five years for control and eradication of many troublesome weeds and grasses. 2 lbs. \$1.15; 6 lbs. \$2.95. Postpaid prices: 2 lbs. \$1.35; 6 lbs. \$3.50.  
**Crabgrass Killer.** Contains PC, which has been thoroughly tested and has produced outstanding results. Safe to use—can be applied with a sprinkling can. 6 1/2 oz. \$1.00; 26 oz. \$3.00. Postpaid prices: 6 1/2 oz. \$1.10; 26 oz. \$3.20.  
**New, Improved Weedone.** The all-round weed-killing miracle. It kills weeds and woody plants without killing the grass. 8 oz. \$1.00; qt. \$2.75; gal. \$6.75. Postpaid prices: 8 oz. \$1.10; qt. \$2.95; gal. \$7.35.

## HOW TO ORDER

You will find a convenient order blank on bottom right hand corner of this page. Write your name and address plainly.

Remit in any manner that suits your convenience. Send your personal check if it's easier. We will bear the cost of Post Office and Express Money Order, or cost of registering letters from places that are not money-order offices. Deduct from the amount of the order.

On orders where the amount is less than 50c, we will accept U. S. postage stamps in good condition (three cents stamps preferred). Letters containing money should always be registered. Money in an ordinary letter is unsafe.

PRICES are those in effect January 1, 1954, and are subject to change.

DELIVERY is free on all orders \$2.00 or over on the East side of the river in the New Orleans area.

MAIL ORDERS—Postage is paid on items so indicated.

FOLLOW ORDERS—Your order may be divided into more than one shipment for seasonal or other reasons. On part shipments a notification will indicate that the balance of the order will follow. If your order cannot be completed we will advise.

SUBSTITUTIONS—Sometimes it is not possible to replace certain varieties of seed that are sold out. However, we will be glad to substitute the nearest variety. If you do not wish us to do this please indicate in the space provided on your order-blank.

ERRORS—If an error occurs in filling your order please notify us at once, returning the original order-blank.

WARRANTY—We warrant to the extent of the purchase price that seeds, bulbs or plants sold are as described on the label or container within recognized tolerances. We give no other or further warranty, express or implied.

## QUALITY PLANT FOODS

**Reuter's Special AC&R PLANT FOOD**  
An entirely new specialty plant food processed especially for Reuter's customers. You can now feed your azaleas, camellias and roses with this one 3-6-12 super fertilizer. In addition to the 3-6-12 analysis, Reuter's Special AC&R contains many of the much talked about trace elements which stimulates more luxuriant growth in your plants. Not prepaid: 5 lbs. 85c; 10 lbs. \$1.45; 25 lbs. \$3.25; 50 lbs. \$5.90.

**VIGORO**  
Recommended highly for lawns, gardens, flowers, shrubbery and trees. Clean, odorless and easy to apply. Not prepaid: 5 lbs. 55c; 10 lbs. 95c; 25 lbs. \$1.70; 100 lbs. \$4.85.

**FULTON'S PLANTABBS**  
An up-to-date fertilizer that dissolves easily when tuckled into soil near the stem of the plant. 10c size; 30 tablets 25c; 75 tablets 50c; 200 tablets \$1.00; 1000 tablets \$3.75, postpaid.

**Krilium**  
MERLOAM FORMULATION  
1 lb. \$1.39 Postpaid \$1.55  
5 lbs. 4.95 5.45

**MULCHES**  
Peat Moss. Imported European Peat Moss will absorb and retain 8 to 10 times its dry weight in water. The finest mulch for roses, azaleas, camellias, etc. Approx. volume loose 18 to 20 bushels. \$5.50 per bale, f.o.b. New Orleans.  
Servall. Dehydrated Sugar Cane Pulp. A wonderful mulch for azaleas, camellias, roses and many other plants. The strain is extremely useful as a litter in poultry houses. Not prepaid: Bale (approx. 100 lbs.) \$2.00; 3 bales \$5.85; 10 bales \$19.00.



for azaleas  
for camellias  
for roses

**REUTER SEED CO., Inc. NEW ORLEANS, LA.**

## Source of Gardening Quality

TP-54 Please Do Not Write in Above Space

Ship the following as per terms of your Descriptive Catalog

Name .....  
Please PRINT Name and Address Plainly  
Street and No. ....  
Post Office..... Rural Route.....Box No.....  
County ..... State.....  
Station or Exp. Office.....  
(Only if different from Post Office)  
Approved by \_\_\_\_\_  
Filled by \_\_\_\_\_  
Checked by \_\_\_\_\_

**LIST YOUR REMITTANCE HERE**  
Enclosed Please Find Dollars/Cents  
Draft or Check.....  
Money Order.....  
Credit Check.....  
Currency.....  
Postage Stamps.....  
Total Amount.....  
When goods are wanted C.O.D. 25% of the amount due must accompany the order. No plants shipped C.O.D.  
NOTE—If cash or stamps are sent by mail, REGISTER THE LETTER.

CUT ALONG DOTTED LINE

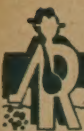
Catalog Number	Quantity	NAMES OF SEED, BULBS, PLANTS, ETC., WANTED	Clerk Check No.	PRICES	
				Dollars	Cents

NOTE: If sold out of a variety ordered, may we substitute with another equally as good?  
Yes..... No.....

Amount Carried Forward

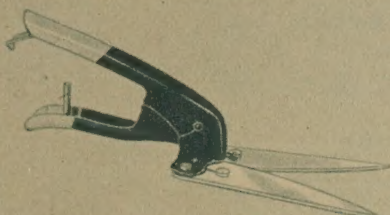
New Orleans Customers add 3% City and State Tax.  
Louisiana Customers not living in New Orleans add 2% State Tax.





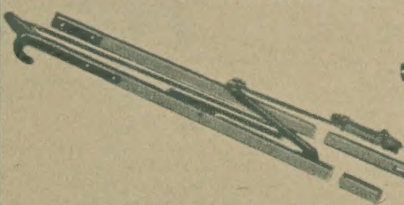
**ORIGINAL "SNAP-CUT" PRUNER**

No. 119—Easy snap-cut action of keen V blades onto non-dulling soft metal anvil cuts large, tough, 3/4" branches like twigs. Pruner beautifully finished in bright chromium plate. All parts easily replaceable. 8" length. \$2.75; Postpaid \$2.95.  
No. 118—Ladies' "Snap-Cut" Pruner, 6" length. \$2.25; Postpaid \$2.45.



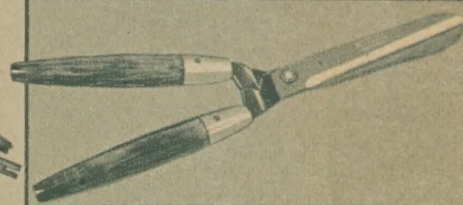
**EZY-CUT SPECIAL GRASS SHEARS**

No. A57—Red enamel pressed steel handles. Tempered steel blades assembled to handles by rivets. A splendid value that will give good, efficient service. \$1.95; Postpaid \$2.15.



**"TIP TOP" TREE PRUNER**

No. 1312S—A patented pruner in two 6' jointed sections which are easily and quickly assembled to make a 12' Tree Pruner. Tempered steel blades, fittings and operating wire. Can be used in 6' or full 12' length. Additional extension sections may be added for even greater length. Two sections 12' length, \$7.75; Postpaid \$8.25.



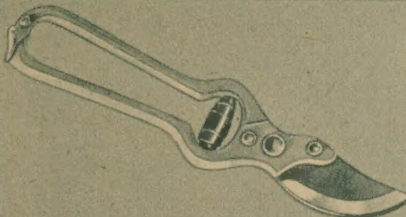
**"LIGHTNING CLIPPER" HEDGE SHEARS**

No. A54-9—Finest cutlery steel, flame hardened edge blades, long bevels and keen edges. Top blade has sharp, hooked teeth to grip twigs for easy cutting. Both blades hardened, tempered, precision hollow ground and beautifully polished. 9" blades. \$3.75; Postpaid \$4.00.



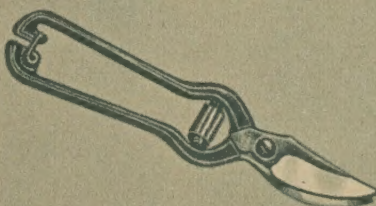
**ROSE SHEARS**

No. FM-4—These new shears cut and hold flowers with one hand—in one motion. They permit easy selection and cutting of stems in thick growth. Protects hands from thorns. A great aid in flower arranging. Full chrome plated. Stainless steel blades cut diagonally for longer life of flower. An ideal gift for any occasion. Overall length 6 1/2 inches. \$2.25; Postpaid \$2.40.



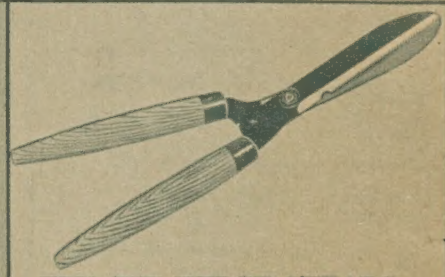
**SPECIAL CALIFORNIA PATTERN PRUNER**

No. 60—An outstanding popular priced pruner with malleable handles and tool steel blade. Plain bolt and nut with volute spring. \$1.50; Postpaid \$1.70.



**LIGHTWEIGHT PRUNING SHEARS**

No. 607-E—An exceptionally fine shear of cutlery steel. Shears wood easily and cleanly. Red enameled handles. Overall length 7 inches. \$2.50; Postpaid \$2.65.



**EZY-CUT HEDGE SHEARS**

No. A14-8—Accurately ground 8" cutlery steel blades notched for cutting large branches. \$2.95; Postpaid \$3.20.



**"LOPPING SHEARS" PROFESSIONAL PRUNER**

No. 530—This pruner offers powerful, dual-cutting action. Lightweight for efficient use, yet strong enough for heavy brush cutting work. Center bolt and nut join blades securely. Cuts 1 1/2" limbs. Overall length 30 inches. \$5.75; Postpaid \$6.95.



**ADMIRAL DUSTER**

No. 766-C—This duster will effectively apply any insecticide powder in any quantity desired. Particularly desirable for higher priced powders. Complete with 24-inch extension and nozzle. \$2.55; Postpaid \$2.70.



**ECLIPSE CONTINUOUS HAND SPRAYER**

No. 447—A stainless steel continuous sprayer that sprays virtually any pest control liquid without corroding or rusting. Capacity: one quart. \$5.70; Postpaid \$5.85.



**PRUNING SAW**

No. 514—A handy pull or draw cut saw for light pruning. Narrow blade for close quarters. Very fast, easy cutter, long handle for reaching and to permit two-hand use. Blade 14" long, 8 points per inch. \$2.75; Postpaid \$2.95.



**ROTO-EDGER**

The tool with the exclusive Full Floating Knee Action and dual shear blades.

No. 10 Standard Roto-Edger—Mainly for sidewalk and curbing use. \$4.45; Postpaid \$4.75.

No. 20 Universal Roto-Edger—For all-purpose edging, trimming along sidewalks, around stepping stones, etc. \$5.45; Postpaid \$5.80.

No. 30 Delux Roto-Edger—Same as No. 20 except for dual wheels for easy management. \$6.45; Postpaid \$6.85.



**HUDSON DUSQUICK**

No. 82—This new bellows type duster protects plants from pests or blight the easy way. Easy action produces a puff for spot dusting, or continuous uniform cloud. 24" extension with swivel nozzle places dust where needed. \$8.95; Postpaid \$9.35.



**FAVORITE**

A new Hudson Sprayer packed with extra-value features—new Saf-T-Lok design—extra-long hose—finest pump made. 1 3/4 gallons capacity.

\$10.35  
Postpaid \$10.85



**BUGWISER**

A sturdily constructed Hudson Compressed-Air-Sprayer. 2 1/4-gallon galvanized tank, 10-inch pump, 3-foot discharge equipment. Offers the greatest value at a most favorable price.

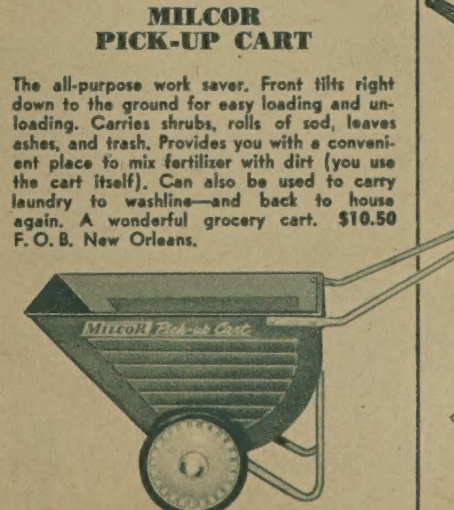
\$7.36  
Postpaid \$7.75



**EDGE-RITE POWER EDGER**

No more back-breaking crawling on hands and knees—no more pinched and aching fingers.

This versatile tool in a matter of seconds trims lawn grass along sidewalks, curbs and around flower beds to give your yard that "landscaped look." May also be converted into a horizontal cutter to mow grass in those hard-to-get-at places. \$24.95  
Postpaid \$25.30



**MILCOR PICK-UP CART**

The all-purpose work saver. Front tilts right down to the ground for easy loading and unloading. Carries shrubs, rolls of sod, leaves, ashes, and trash. Provides you with a convenient place to mix fertilizer with dirt (you use the cart itself). Can also be used to carry laundry to washline—and back to house again. A wonderful grocery cart. \$10.50  
F. O. B. New Orleans.



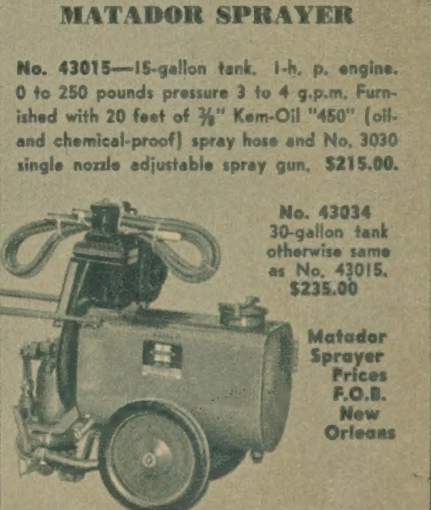
**VIGORO SPREADER**

These spreaders take the work out of fertilizing lawn areas and reduce time and effort to a minimum. Assures more even distribution. Available in four sizes.

Model BR Junior Model  
25-lb. capacity 50-lb. capacity  
\$11.12 \$12.85  
Postpaid Postpaid  
\$12.10 \$13.95

Standard Model  
80- to 90-lb. capacity  
\$47.05  
F. O. B. New Orleans

Special Model—  
110- to 125-lb. capacity, \$60.66  
F. O. B. New Orleans



**MATADOR SPRAYER**

No. 43015—15-gallon tank, 1-h. p. engine. 0 to 250 pounds pressure 3 to 4 g.p.m. Furnished with 20 feet of 3/8" Kem-Oil "450" (oil and chemical-proof) spray hose and No. 3030 single nozzle adjustable spray gun. \$215.00.

No. 43034  
30-gallon tank otherwise same as No. 43015. \$235.00

Matador Sprayer Prices F.O.B. New Orleans

No. 1  
Field  
Grown

# Roses

PATENTED ROSES

Charlotte Armstrong. See illustration.

Chrysler Imperial. (Pat 1147). A smashing, rich crimson rose with oxblood red overtones. Each \$2.75; 3 for \$7.20.

Forty-Niner. See illustration.

Helen Traubel. (Pat. 1028). An outstanding sparkling pink. Each \$2.75; 3 for \$7.20.

K. T. Marshall. (Pat. 407). A vigorous grower producing open, clear, warm, sparkling pink blooms. Each \$1.75; 3 for \$4.65. Mojave. See illustration.

PEACE, Pat. 591  
Each \$2.50; 3 for \$6.60

1954 All-America  
Selection  
MOJAVE, Pat. 1176  
Each \$3.00; 3 for \$7.95

## Rose MAIL ORDERS

Mail orders for roses will be forwarded direct from our grower to you insuring field freshness. All mail orders will be filled with No. 1, 2-year-old, field-grown BARE-ROOTED BUSHES.

MAIL ORDER	Each ....\$1.10	
ROSE PRICES	3 for ....\$3.00	Postpaid
	12 for ...\$11.75	

Note: These prices are for all roses listed except where otherwise specified.

## EVERBLOOMING ROSES

Better Times. HT. Glorious red color, prized for its long stems and pointed buds. Large blooms.

Briarcliff. HT. Large, deep rose-pink blooms, lighter on outer petals. Vigorous, free blooming.

Caledonia. HT. One of the prettiest white roses we know. Both the long-pointed buds and the huge, double flowers are pure white, with exquisitely curved and infolded petals.

Condessa de Santiago. HT. The globular blooms are a blend of rich yellow and copper-scarlet, making a striking combination as the flowers mature.

Crimson Glory. HT. Produces beautiful blooms of deep, vivid crimson color with a velvety texture. One of the highest rated hybrid tea roses.

The Doctor. HT. Sparkling pink, pointed buds. One of the largest and most beautiful of all Roses. Very fragrant. Exceptionally fine.

Edith McFarland. HT. The flowers are very large, deep sparkling pink in color, and are carried on long, strong stems on vigorous, upright bushes. One of the best pinks.

Etoile de Hollande. HT. Brilliant crimson-red blooms with enormous, well-arranged petals. Particularly beautiful when half open. Free bloomer. Delightfully fragrant.

Golden Charm. HT. Beautiful golden yellow, surpassing the popular Marechal Niel. The high-centered blooms are borne on strong, spreading plants with splendid foliage. Easy to grow.

K. A. Viktoria. HT. Perfectly formed, creamy white buds developing into snowy white blooms tinted lemon at center. Delightfully fragrant and long lasting.

Mrs. Pierre S. du Pont. HT. The double blooms are a rich golden yellow with deeper shaded centers.

Poinsettia. HT. The most brilliant red Rose produced. The buds are ideal in form, long and pointed, and the color is close to a poinsettia-scarlet.

Pres. H. Hoover. HT. A glorious Rose in a charming combination of cerise-pink, flame-scarlet and yellow.

Radiance. HT. Brilliant rose-pink buds opening into well-formed globular, very fragrant and long-lasting blooms.



Poinsettia

## 6 GREAT Roses

For Only \$5.39  
Mail Orders Only!



Golden Charm



Pres. H. Hoover



Red Radiance



The Doctor



K. A. Viktoria

## Climbing Roses

Every garden should contain at least a few Climbing Roses. Contrary to popular belief, they are easier to grow than bush Roses.

Climbing Blaze. Hardy everblooming scarlet-red Roses. It is a vigorous climber covered with flowers until late Autumn. Each \$1.35; 3 for \$3.40.

Dr. J. H. Nicholas. (Pat. 457.) Hardy, everblooming plant. Flowers double, deep rose-pink, very fragrant. Blooms persistently all season. Each \$2.00; 3 for \$5.25.

Climbing Crimson Glory (Pat. 736). Bears rich crimson blooms, richly perfumed, on a vigorous climbing plant. Each \$2.50; 3 for \$6.60.

Paul's Scarlet Climber. Very popular Climbing Rose. The large, vivid scarlet blooms, unequalled in brilliancy, are borne in large clusters of 3 to 20 in early spring.

Climbing Red Radiance. One of the finest climbers, producing fragrant, brilliant deep rose-red blooms.



FORTY-NINER, Pat. 792  
Each \$2.50; 3 for \$6.60



CHARLOTTE ARMSTRONG, Plant Patent No. 455  
Each \$2.25; 3 for \$6.00

## Local ROSE ORDERS

For our local customers, orders will be filled at our nursery with our No. 1, 2-year-old, field-grown PACKAGED & PARAFFINED ROSES. Sorry, we cannot accept mail orders on packaged roses.

LOCAL PACKAGED	Each .....	\$1.20
ROSE PRICES	3 for .....	\$3.45
	12 for .....	\$13.20

Note: These prices are for all roses listed except where otherwise specified.

## EVERBLOOMING ROSES (Cont.)

Red Radiance. HT. Brilliant deep rose-red. Flowers are globular in shape, very fragrant. The blooms come freely on splendid cutting stems.

Talisman. HT. Brilliant red and golden buds that open to beautifully shaped blooms of scarlet-orange and golden yellow. Vigorous grower.

## FLORIBUNDA ROSES

Sometimes called "Fairy Roses" because of the dainty blooms. Low in growth. Continuous in bloom.

Floradora. Exquisitely formed buds of glowing orange-scarlet are carried in large sprays, opening into small camellia-like blooms.

Golden Salmon. Blazing orange blooms and a score of orange-scarlet buds.

Goldlocks. (Pat. 672.) Here is the long-awaited true golden-yellow floribunda. Produces the overall effect of a golden yellow mass. Each \$1.50; 3 for \$3.90.

Improved Lafayette. Glowing red blooms, deeply suffused vivid crimson. Fine bedding Rose; free-flowering.

Ma Perkins. (Pat. 1143.) Forms dainty buds which open to a delicate coral-pink full bloom. Each \$2.25; 3 for \$6.00.

Pinochio. (Pat. 484.) An extremely hardy bush that bears a profusion of soft pink blooms tinted gold at base. Each \$1.50; 3 for \$3.90.

Red Pinochio. (Pat. 812.) The buds are deep, satiny, carmine on outside of petals and bright carmine on inside. Each \$1.50; 3 for \$3.90.



REUTER SEED CO., INC.

Two Stores to Serve You

320 N. Carrollton Ave. } GA 3141  
1035 Decatur Street }

(Direct Mail Orders to Department "M")  
NEW ORLEANS 9, LOUISIANA